

Smad4 Antibody - C-terminal region

Rabbit Polyclonal Antibody

Catalog # AI11437

Product Information

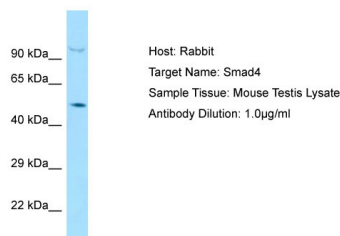
Application	WB
Primary Accession	E3SRG8
Reactivity	Human, Mouse, Rat, Rabbit, Zebrafish, Goat, Dog, Horse, Bovine, Sheep
Predicted	Human, Mouse, Rat, Rabbit, Zebrafish, Pig, Bovine, Sheep
Host	Rabbit
Clonality	Polyclonal
Calculated MW	50 kDa

Additional Information

Format	Liquid. Purified antibody supplied in 1x PBS buffer with 0.09% (w/v) sodium azide and 2% sucrose.
Reconstitution & Storage	Add 50 μ l of distilled water. Final Anti-Smad4 antibody concentration is 1 mg/ml in PBS buffer with 2% sucrose. For longer periods of storage, store at -20°C. Avoid repeat freeze-thaw cycles.
Precautions	Smad4 Antibody - C-terminal region is for research use only and not for use in diagnostic or therapeutic procedures.

Protein Information

Images



Host: Rabbit
Target Name: Smad4
Sample Tissue: Mouse Testis lysates
Antibody Dilution: 1.0 μ g/ml

Please note: All products are 'FOR RESEARCH USE ONLY. NOT FOR USE IN DIAGNOSTIC OR THERAPEUTIC PROCEDURES'.