

# MAGEA9 antibody - N-terminal region

Rabbit Polyclonal Antibody

Catalog # AI11438

## Product Information

---

<b>Application</b>	WB
<b>Primary Accession</b>	<a href="#">P43362</a>
<b>Other Accession</b>	<a href="#">NM_005365</a> , <a href="#">NP_005356</a>
<b>Reactivity</b>	Human
<b>Predicted</b>	Human
<b>Host</b>	Rabbit
<b>Clonality</b>	Polyclonal
<b>Calculated MW</b>	35088

## Additional Information

---

<b>Gene ID</b>	4108;728269
<b>Alias Symbol</b> <b>Other Names</b>	CT1.9, MAGE9, MAGEA9B Melanoma-associated antigen 9, Cancer/testis antigen 1.9, CT1.9, MAGE-9 antigen, MAGEA9, MAGE9, MAGEA9A
<b>Format</b>	Liquid. Purified antibody supplied in 1x PBS buffer with 0.09% (w/v) sodium azide and 2% sucrose.
<b>Reconstitution &amp; Storage</b>	Add 100 ul of distilled water. Final anti-MAGEA9 antibody concentration is 1 mg/ml in PBS buffer with 2% sucrose. For longer periods of storage, store at 20°C. Avoid repeat freeze-thaw cycles.
<b>Precautions</b>	MAGEA9 antibody - N-terminal region is for research use only and not for use in diagnostic or therapeutic procedures.

## Protein Information

---

<b>Name</b>	MAGEA9
<b>Synonyms</b>	MAGE9, MAGEA9A
<b>Function</b>	Not known, though may play a role in embryonal development and tumor transformation or aspects of tumor progression.
<b>Tissue Location</b>	Expressed in many tumors of several types, such as melanoma, head and neck squamous cell carcinoma, lung carcinoma and breast carcinoma, but not in normal tissues except for testes and placenta

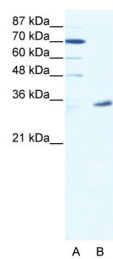
## References

---

Oehlrich,N., et al., (2005) Int. J. Cancer 117 (2), 256-264  
Reconstitution and Storage:For short term use, store at 2-8C up to 1 week. For long term storage, store at -20C in small aliquots to prevent freeze-thaw cycles.

## Images

---



WB Suggested Anti-MAGEA9 Antibody Titration: 2.5µg/ml  
ELISA Titer: 1:62500  
Positive Control: HepG2 cell lysate

Please note: All products are 'FOR RESEARCH USE ONLY. NOT FOR USE IN DIAGNOSTIC OR THERAPEUTIC PROCEDURES'.