

Pura antibody - C-terminal region

Rabbit Polyclonal Antibody

Catalog # AI11443

Product Information

Application	WB
Primary Accession	P42669
Other Accession	NM_008989 , NP_033015
Reactivity	Human, Mouse, Rat, Rabbit, Zebrafish, Dog, Bovine, Sheep, Yeast
Predicted	Mouse, Rat, Rabbit, Bovine, Sheep
Host	Rabbit
Clonality	Polyclonal
Calculated MW	34884

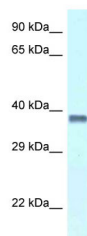
Additional Information

Gene ID	19290
Alias Symbol	CAGER-1, Pur-alpha, ssCRE-BP
Other Names	Transcriptional activator protein Pur-alpha, Purine-rich single-stranded DNA-binding protein alpha, Pura
Format	Liquid. Purified antibody supplied in 1x PBS buffer with 0.09% (w/v) sodium azide and 2% sucrose.
Reconstitution & Storage	Add 50 ul of distilled water. Final anti-Pura antibody concentration is 1 mg/ml in PBS buffer with 2% sucrose. For longer periods of storage, store at 20°C. Avoid repeat freeze-thaw cycles.
Precautions	Pura antibody - C-terminal region is for research use only and not for use in diagnostic or therapeutic procedures.

Protein Information

Name	Pura
Function	This is a probable transcription activator that specifically binds the purine-rich single strand of the PUR element located upstream of the c-Myc gene. May play a role in the initiation of DNA replication and in recombination.
Cellular Location	Nucleus.

Images



WB Suggested Anti-Pura Antibody Titration: 1.0 µg/ml
Positive Control: Mouse Thymus

Please note: All products are 'FOR RESEARCH USE ONLY. NOT FOR USE IN DIAGNOSTIC OR THERAPEUTIC PROCEDURES'.