

MEF2B antibody - middle region

Rabbit Polyclonal Antibody

Catalog # AI11446

Product Information

Application	WB
Primary Accession	Q02080
Other Accession	NM_005919 , NP_005910
Reactivity	Human
Predicted	Human
Host	Rabbit
Clonality	Polyclonal
Calculated MW	38639

Additional Information

Gene ID	100271849;4207
Alias Symbol Other Names	FLJ32599, FLJ46391, RSRFR2, MEF2B, LOC729991-MEF2B Myocyte-specific enhancer factor 2B, RSRFR2, Serum response factor-like protein 2, MEF2B, XMEF2
Format	Liquid. Purified antibody supplied in 1x PBS buffer with 0.09% (w/v) sodium azide and 2% sucrose.
Reconstitution & Storage	Add 50 ul of distilled water. Final anti-MEF2B antibody concentration is 1 mg/ml in PBS buffer with 2% sucrose. For longer periods of storage, store at 20°C. Avoid repeat freeze-thaw cycles.
Precautions	MEF2B antibody - middle region is for research use only and not for use in diagnostic or therapeutic procedures.

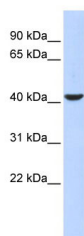
Protein Information

Name	MEF2B
Synonyms	XMEF2
Function	Transcriptional activator which binds specifically to the MEF2 element, 5'-YTA[AT](4)TAR-3', found in numerous muscle-specific genes. Activates transcription via this element. May be involved in muscle-specific and/or growth factor-related transcription.
Cellular Location	Nucleus.
Tissue Location	Expressed in skeletal and cardiac muscle and brain.

References

Gong,X., (er) BMC Mol. Biol. 7, 7 (2006)Reconstitution and Storage:For short term use, store at 2-8C up to 1 week. For long term storage, store at -20C in small aliquots to prevent freeze-thaw cycles.

Images



WB Suggested Anti-MEF2B Antibody Titration: 0.2-1 µg/ml
ELISA Titer: 1:62500
Positive Control: 293T cell lysate

Please note: All products are 'FOR RESEARCH USE ONLY. NOT FOR USE IN DIAGNOSTIC OR THERAPEUTIC PROCEDURES'.