

NAB1 antibody - C-terminal region

Rabbit Polyclonal Antibody

Catalog # AI11448

Product Information

| | |
|--------------------------|--|
| Application | WB |
| Primary Accession | Q13506 |
| Other Accession | NM_005966 , NP_005957 |
| Reactivity | Human, Mouse, Rat, Rabbit, Zebrafish, Dog, Horse, Bovine |
| Predicted | Human, Mouse, Rat, Rabbit, Zebrafish, Pig, Chicken, Bovine |
| Host | Rabbit |
| Clonality | Polyclonal |
| Calculated MW | 54401 |

Additional Information

| | |
|-------------------------------------|---|
| Gene ID | 4664 |
| Other Names | NGFI-A-binding protein 1, EGR-1-binding protein 1, Transcriptional regulatory protein p54, NAB1 |
| Format | Liquid. Purified antibody supplied in 1x PBS buffer with 0.09% (w/v) sodium azide and 2% sucrose. |
| Reconstitution & Storage | Add 50 ul of distilled water. Final anti-NAB1 antibody concentration is 1 mg/ml in PBS buffer with 2% sucrose. For longer periods of storage, store at 20°C. Avoid repeat freeze-thaw cycles. |
| Precautions | NAB1 antibody - C-terminal region is for research use only and not for use in diagnostic or therapeutic procedures. |

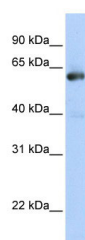
Protein Information

| | |
|--------------------------|--|
| Name | NAB1 |
| Function | Acts as a transcriptional repressor for zinc finger transcription factors EGR1 and EGR2. |
| Cellular Location | Nucleus. |
| Tissue Location | Isoform Short is found in myeloid leukemia cell line KG-1 |

References

Moser,D., (2007) World J. Biol. Psychiatry 8 (4), 262-268 Reconstitution and Storage:For short term use, store at 2-8C up to 1 week. For long term storage, store at -20C in small aliquots to prevent freeze-thaw cycles.

Images



WB Suggested Anti-NAB1 Antibody Titration: 0.2-1 µg/ml
ELISA Titer: 1:312500
Positive Control: Transfected 293T

Please note: All products are 'FOR RESEARCH USE ONLY. NOT FOR USE IN DIAGNOSTIC OR THERAPEUTIC PROCEDURES'.