

KBTBD10 antibody - C-terminal region

Rabbit Polyclonal Antibody

Catalog # AI11453

Product Information

Application	WB
Primary Accession	O60662
Other Accession	NM_006063 , NP_006054
Reactivity	Human, Mouse, Rat, Rabbit, Pig, Dog, Horse, Bovine
Predicted	Human, Mouse, Pig, Dog, Horse, Bovine
Host	Rabbit
Clonality	Polyclonal
Calculated MW	68037

Additional Information

Gene ID	10324
Alias Symbol	SARCOSIN, KBTBD10
Other Names	Kelch-like protein 41, Kel-like protein 23, Kelch repeat and BTB domain-containing protein 10, Kelch-related protein 1, Sarcosin, KLHL41, KBTBD10, KRP1
Format	Liquid. Purified antibody supplied in 1x PBS buffer with 0.09% (w/v) sodium azide and 2% sucrose.
Reconstitution & Storage	Add 100 ul of distilled water. Final anti-KBTBD10 antibody concentration is 1 mg/ml in PBS buffer with 2% sucrose. For longer periods of storage, store at 20°C. Avoid repeat freeze-thaw cycles.
Precautions	KBTBD10 antibody - C-terminal region is for research use only and not for use in diagnostic or therapeutic procedures.

Protein Information

Name	KLHL41
Synonyms	KBTBD10, KRP1
Function	Involved in skeletal muscle development and differentiation. Regulates proliferation and differentiation of myoblasts and plays a role in myofibril assembly by promoting lateral fusion of adjacent thin fibrils into mature, wide myofibrils. Required for pseudopod elongation in transformed cells.
Cellular Location	Cytoplasm. Cytoplasm, cytoskeleton {ECO:0000250 UniProtKB:A2AUC9}. Cell projection, pseudopodium {ECO:0000250 UniProtKB:Q9ER30}. Cell projection,

ruffle {ECO:0000250|UniProtKB:Q9ER30}. Cytoplasm, myofibril, sarcomere, M line {ECO:0000250|UniProtKB:A2AUC9} Sarcoplasmic reticulum membrane Endoplasmic reticulum membrane Note=Predominantly cytoplasmic but can colocalize with F-actin at the membrane ruffle-like structures at the tips of transformation-specific pseudopodia.

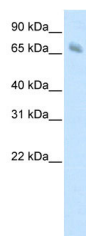
Tissue Location

Sarcomeric muscle.

References

Lim,D.S., et al., (2001) J. Am. Coll. Cardiol. 38 (4), 1175-1180Reconstitution and Storage:For short term use, store at 2-8C up to 1 week. For long term storage, store at -20C in small aliquots to prevent freeze-thaw cycles.

Images



WB Suggested Anti-KBTBD10 Antibody Titration:
1.25µg/ml
ELISA Titer: 1:1562500
Positive Control: Human Muscle

Please note: All products are 'FOR RESEARCH USE ONLY. NOT FOR USE IN DIAGNOSTIC OR THERAPEUTIC PROCEDURES'.