

PPARD antibody - N-terminal region

Rabbit Polyclonal Antibody

Catalog # AI11457

Product Information

Application	WB, IHC
Primary Accession	Q03181
Other Accession	NM_001039694 , NP_001034783
Reactivity	Human, Mouse, Rat, Rabbit, Pig, Dog, Horse, Bovine, Yeast
Predicted	Mouse, Rat, Pig, Chicken, Dog, Bovine
Host	Rabbit
Clonality	Polyclonal
Calculated MW	49903

Additional Information

Gene ID	5467
Alias Symbol Other Names	FAAR, MGC3931, NR1C2, NUC1, NUCI, NUCII, PPAR-beta, PPARB Peroxisome proliferator-activated receptor delta, PPAR-delta, NUCI, Nuclear hormone receptor 1, NUC1, Nuclear receptor subfamily 1 group C member 2, Peroxisome proliferator-activated receptor beta, PPAR-beta, PPARD, NR1C2, PPARB
Format	Liquid. Purified antibody supplied in 1x PBS buffer with 0.09% (w/v) sodium azide and 2% sucrose.
Reconstitution & Storage	Add 50 ul of distilled water. Final anti-PPARD antibody concentration is 1 mg/ml in PBS buffer with 2% sucrose. For longer periods of storage, store at 20°C. Avoid repeat freeze-thaw cycles.
Precautions	PPARD antibody - N-terminal region is for research use only and not for use in diagnostic or therapeutic procedures.

Protein Information

Name	PPARD (HGNC:9235)
Synonyms	NR1C2, PPARB
Function	Ligand-activated transcription factor key mediator of energy metabolism in adipose tissues (PubMed: 35675826). Receptor that binds peroxisome proliferators such as hypolipidemic drugs and fatty acids. Has a preference for poly-unsaturated fatty acids, such as gamma- linoleic acid and eicosapentanoic acid. Once activated by a ligand, the receptor binds to promoter elements of target genes. Regulates the peroxisomal beta-oxidation

pathway of fatty acids. Functions as transcription activator for the acyl-CoA oxidase gene. Decreases expression of NPC1L1 once activated by a ligand.

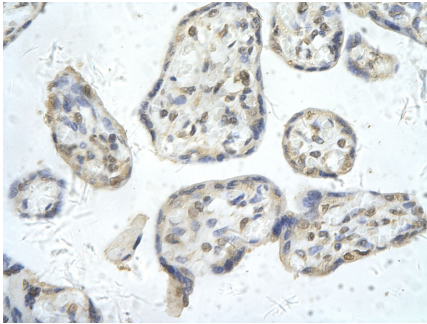
Cellular Location

Nucleus.

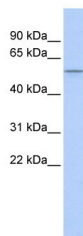
Tissue Location

Ubiquitous with maximal levels in placenta and skeletal muscle

Images



Rabbit Anti-PPARD antibody
Catalog Number: AI11457
Paraffin Embedded Tissue: Human Placenta cell
Cellular Data: Epithelial cells of renal tubule
Antibody Concentration: 4.0-8.0 µg/ml
Magnification: 400X



WB Suggested Anti-PPARD Antibody Titration: 0.2-1 µg/ml
ELISA Titer: 1:12500
Positive Control: 721_B cell lysate
PPARD is strongly supported by BioGPS gene expression data to be expressed in Human 721_B cells

Please note: All products are 'FOR RESEARCH USE ONLY. NOT FOR USE IN DIAGNOSTIC OR THERAPEUTIC PROCEDURES'.