

PROP1 antibody - middle region

Rabbit Polyclonal Antibody

Catalog # AI11458

Product Information

Application	WB
Primary Accession	O75360
Other Accession	NM_006261 , NP_006252
Reactivity	Human, Mouse, Rat, Rabbit, Pig, Dog, Horse, Bovine, Sheep
Predicted	Human, Mouse, Rat, Pig, Chicken, Dog, Horse, Bovine, Sheep
Host	Rabbit
Clonality	Polyclonal
Calculated MW	24984

Additional Information

Gene ID	5626
Alias Symbol	CPHD2, PROP-1
Other Names	Homeobox protein prophet of Pit-1, PROP-1, Pituitary-specific homeodomain factor, PROP1
Format	Liquid. Purified antibody supplied in 1x PBS buffer with 0.09% (w/v) sodium azide and 2% sucrose.
Reconstitution & Storage	Add 50 ul of distilled water. Final anti-PROP1 antibody concentration is 1 mg/ml in PBS buffer with 2% sucrose. For longer periods of storage, store at 20°C. Avoid repeat freeze-thaw cycles.
Precautions	PROP1 antibody - middle region is for research use only and not for use in diagnostic or therapeutic procedures.

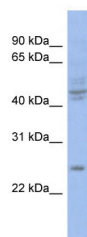
Protein Information

Name	PROP1
Function	Possibly involved in the ontogenesis of pituitary gonadotropes, as well as somatotropes, lactotropes and caudomedial thyrotropes.
Cellular Location	Nucleus {ECO:0000255 PROSITE-ProRule:PRU00108}.
Tissue Location	Expressed specifically in embryonic pituitary.

References

Vieira,T.C., (2006) Endocrine 30 (3), 365-369 Reconstitution and Storage:For short term use, store at 2-8C up to 1 week. For long term storage, store at -20C in small aliquots to prevent freeze-thaw cycles.

Images



WB Suggested Anti-PROP1 Antibody Titration: 0.2-1 µg/ml
ELISA Titer: 1:1562500
Positive Control: COLO205 cell lysate
PROP1 is supported by BioGPS gene expression data to be expressed in COLO205

Please note: All products are 'FOR RESEARCH USE ONLY. NOT FOR USE IN DIAGNOSTIC OR THERAPEUTIC PROCEDURES'.