

Hmg20b antibody - middle region

Rabbit Polyclonal Antibody

Catalog # AI11460

Product Information

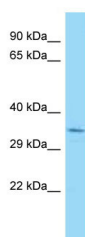
Application	WB
Primary Accession	D4A586
Other Accession	NM_001108731 , NP_001102201
Reactivity	Human, Mouse, Rat, Rabbit, Zebrafish, Dog, Horse, Bovine, Yeast
Predicted	Rat, Zebrafish, Bovine
Host	Rabbit
Clonality	Polyclonal
Calculated MW	34 kDa

Additional Information

Format	Liquid. Purified antibody supplied in 1x PBS buffer with 0.09% (w/v) sodium azide and 2% sucrose.
Reconstitution & Storage	Add 50 ul of distilled water. Final anti-Hmg20b antibody concentration is 1 mg/ml in PBS buffer with 2% sucrose. For longer periods of storage, store at 20°C. Avoid repeat freeze-thaw cycles.
Precautions	Hmg20b antibody - middle region is for research use only and not for use in diagnostic or therapeutic procedures.

Protein Information

Images



WB Suggested Anti-Hmg20b Antibody Titration: 1.0 µg/ml
Positive Control: Rat Muscle

Please note: All products are 'FOR RESEARCH USE ONLY. NOT FOR USE IN DIAGNOSTIC OR THERAPEUTIC PROCEDURES'.