

PLAGL1 antibody - N-terminal region

Rabbit Polyclonal Antibody

Catalog # AI11467

Product Information

Application	WB
Primary Accession	Q9UM63
Other Accession	NM_002656 , NP_002647
Reactivity	Human, Mouse, Rat, Rabbit, Zebrafish, Pig, Dog, Horse, Bovine
Predicted	Mouse, Rat, Rabbit, Pig, Chicken, Bovine
Host	Rabbit
Clonality	Polyclonal
Calculated MW	50819

Additional Information

Gene ID	5325
Alias Symbol	ZAC, LOT1, ZAC1
Other Names	Zinc finger protein PLAGL1, Lost on transformation 1, LOT-1, Pleiomorphic adenoma-like protein 1, Tumor suppressor ZAC, PLAGL1, LOT1, ZAC
Format	Liquid. Purified antibody supplied in 1x PBS buffer with 0.09% (w/v) sodium azide and 2% sucrose.
Reconstitution & Storage	Add 100 ul of distilled water. Final anti-PLAGL1 antibody concentration is 1 mg/ml in PBS buffer with 2% sucrose. For longer periods of storage, store at 20°C. Avoid repeat freeze-thaw cycles.
Precautions	PLAGL1 antibody - N-terminal region is for research use only and not for use in diagnostic or therapeutic procedures.

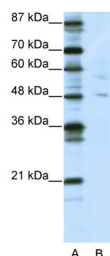
Protein Information

Name	PLAGL1
Synonyms	LOT1, ZAC
Function	Acts as a transcriptional activator (PubMed: 9722527). Involved in the transcriptional regulation of type 1 receptor for pituitary adenylate cyclase-activating polypeptide.
Cellular Location	Nucleus

References

Poulin,H. (2005) Cancer Lett. 227 (2), 185-191
Reconstitution and Storage:For short term use, store at 2-8C up to 1 week. For long term storage, store at -20C in small aliquots to prevent freeze-thaw cycles.

Images



WB Suggested Anti-PLAGL1 Antibody Titration: 5.0µg/ml
ELISA Titer: 1:1562500
Positive Control: 293T cell lysate
PLAGL1 is strongly supported by BioGPS gene expression data to be expressed in Human HEK293T cells

Please note: All products are 'FOR RESEARCH USE ONLY. NOT FOR USE IN DIAGNOSTIC OR THERAPEUTIC PROCEDURES'.