

ECD antibody - middle region

Rabbit Polyclonal Antibody

Catalog # AI11476

Product Information

Application	WB
Primary Accession	O95905
Other Accession	NM_007265 , NP_009196
Reactivity	Human, Rat, Rabbit, Pig, Goat, Horse, Bovine
Predicted	Human, Rabbit, Pig, Goat, Dog, Horse, Bovine
Host	Rabbit
Clonality	Polyclonal
Calculated MW	72758

Additional Information

Gene ID	11319
Alias Symbol	GCR2, HSGT1
Other Names	Protein SGT1, hSGT1, Protein ecdysoneless homolog, Suppressor of GCR2, ECD, SGT1
Format	Liquid. Purified antibody supplied in 1x PBS buffer with 0.09% (w/v) sodium azide and 2% sucrose.
Reconstitution & Storage	Add 50 ul of distilled water. Final anti-ECD antibody concentration is 1 mg/ml in PBS buffer with 2% sucrose. For longer periods of storage, store at 20°C. Avoid repeat freeze-thaw cycles.
Precautions	ECD antibody - middle region is for research use only and not for use in diagnostic or therapeutic procedures.

Protein Information

Name	ECD
Function	Regulator of p53/TP53 stability and function. Inhibits MDM2- mediated degradation of p53/TP53 possibly by cooperating in part with TXNIP (PubMed: 16849563 , PubMed: 23880345). May be involved transcriptional regulation. In vitro has intrinsic transactivation activity enhanced by EP300. May be a transcriptional activator required for the expression of glycolytic genes (PubMed: 19919181 , PubMed: 9928932). Involved in regulation of cell cycle progression. Proposed to disrupt Rb-E2F binding leading to transcriptional activation of E2F proteins (PubMed: 19640839). The cell cycle -regulating function may depend on its RUVBL1-mediated association with the R2TP complex (PubMed: 26711270). May play a role in regulation of pre-mRNA

splicing (PubMed:[24722212](#)). Participates together with DDX39A in mRNA nuclear export (PubMed:[33941617](#)).

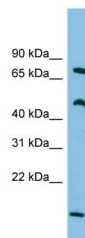
Cellular Location

Cytoplasm. Nucleus Note=Predominantly is located in the cytoplasm

Tissue Location

Highly expressed in muscle and heart. Over- expressed in pancreatic and breast cancers

Images



WB Suggested Anti-ECD Antibody Titration: 0.2-1 µg/ml
ELISA Titer: 1:312500
Positive Control: ACHN cell lysate
ECD is supported by BioGPS gene expression data to be expressed in ACHN

Please note: All products are 'FOR RESEARCH USE ONLY. NOT FOR USE IN DIAGNOSTIC OR THERAPEUTIC PROCEDURES'.