

Dpf3 antibody - N-terminal region

Rabbit Polyclonal Antibody

Catalog # AI11477

Product Information

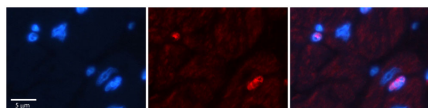
Application	WB
Primary Accession	P58269-3
Other Accession	NM_058212 , NP_478119
Reactivity	Human, Mouse, Rat, Rabbit, Zebrafish, Pig, Horse
Predicted	Human, Mouse, Rabbit, Zebrafish, Pig
Host	Rabbit
Clonality	Polyclonal
Calculated MW	40 KDa

Additional Information

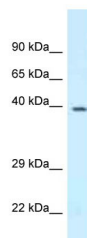
Alias Symbol	2810403B03Rik, C78788, CERD4, cer-d4, BAF45C, 6530402L11Rik
Format	Liquid. Purified antibody supplied in 1x PBS buffer with 0.09% (w/v) sodium azide and 2% sucrose.
Reconstitution & Storage	Add 50 ul of distilled water. Final anti-Dpf3 antibody concentration is 1 mg/ml in PBS buffer with 2% sucrose. For longer periods of storage, store at 20°C. Avoid repeat freeze-thaw cycles.
Precautions	Dpf3 antibody - N-terminal region is for research use only and not for use in diagnostic or therapeutic procedures.

Protein Information

Images



Rabbit Anti-Dpf3 Antibody
Catalog Number: AI11477
Formalin Fixed Paraffin Embedded Tissue: Human Adult heart
Observed Staining: Nuclear (not in cardiomyocytes but in fibrocytes in endomysium)
Primary Antibody
Concentration: 1:600
Secondary Antibody: Donkey anti-Rabbit-Cy2/3
Secondary Antibody
Concentration: 1:200
Magnification: 20X
Exposure Time: 0.5 2.0 sec
Protocol located in Reviews and Data.



WB Suggested Anti-Dpf3 Antibody Titration: 1.0 μ g/ml
Positive Control: Mouse Spleen

Please note: All products are 'FOR RESEARCH USE ONLY. NOT FOR USE IN DIAGNOSTIC OR THERAPEUTIC PROCEDURES'.