

# CBX6 antibody - N-terminal region

Rabbit Polyclonal Antibody

Catalog # AI11489

## Product Information

---

<b>Application</b>	WB, IHC
<b>Primary Accession</b>	<a href="#">O95503</a>
<b>Other Accession</b>	<a href="#">NM_014292</a> , <a href="#">NP_055107</a>
<b>Reactivity</b>	Human, Mouse, Rat, Rabbit, Zebrafish, Pig, Dog, Horse, Bovine
<b>Predicted</b>	Human, Mouse, Rat, Zebrafish, Bovine
<b>Host</b>	Rabbit
<b>Clonality</b>	Polyclonal
<b>Calculated MW</b>	43898

## Additional Information

---

<b>Gene ID</b>	23466
<b>Other Names</b>	Chromobox protein homolog 6, CBX6
<b>Format</b>	Liquid. Purified antibody supplied in 1x PBS buffer with 0.09% (w/v) sodium azide and 2% sucrose.
<b>Reconstitution &amp; Storage</b>	Add 100 ul of distilled water. Final anti-CBX6 antibody concentration is 1 mg/ml in PBS buffer with 2% sucrose. For longer periods of storage, store at 20°C. Avoid repeat freeze-thaw cycles.
<b>Precautions</b>	CBX6 antibody - N-terminal region is for research use only and not for use in diagnostic or therapeutic procedures.

## Protein Information

---

<b>Name</b>	CBX6
<b>Function</b>	Component of a Polycomb group (PcG) multiprotein PRC1-like complex, a complex class required to maintain the transcriptionally repressive state of many genes, including Hox genes, throughout development (PubMed: <a href="#">21282530</a> ). PcG PRC1 complex acts via chromatin remodeling and modification of histones; it mediates monoubiquitination of histone H2A 'Lys-119', rendering chromatin heritably changed in its expressibility. Possibly contributes to the target selectivity of the PRC1 complex by binding specific regions of chromatin (PubMed: <a href="#">18927235</a> ). Recruitment to chromatin might occur in an H3K27me3- independent fashion (By similarity). May have a PRC1-independent function in embryonic stem cells (By similarity).
<b>Cellular Location</b>	Nucleus. Chromosome. Note=Uniformly distributed in the nucleoplasm

(PubMed:18927235). Localizes to the inactivated X chromosome in females (By similarity). {ECO:0000250|UniProtKB:Q9DBY5, ECO:0000269|PubMed:18927235}

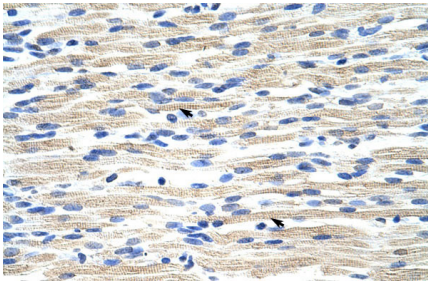
## References

---

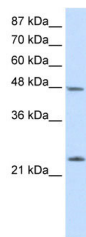
Strausberg,R.L., (2002) Proc. Natl. Acad. Sci. U.S.A. 99 (26), 16899-16903  
Reconstitution and Storage:For short term use, store at 2-8C up to 1 week. For long term storage, store at -20C in small aliquots to prevent freeze-thaw cycles.

## Images

---



Human Muscle



WB Suggested Anti-CBX6 Antibody Titration: 2.5µg/ml  
Positive Control: HepG2 cell lysate

Please note: All products are 'FOR RESEARCH USE ONLY. NOT FOR USE IN DIAGNOSTIC OR THERAPEUTIC PROCEDURES'.