

PATZ1 antibody - middle region

Rabbit Polyclonal Antibody

Catalog # AI11491

Product Information

Application	WB, IHC
Primary Accession	Q9HBE1
Other Accession	NM_014323 , NP_055138
Reactivity	Human, Mouse, Rat, Rabbit, Zebrafish, Pig, Dog, Horse, Bovine
Predicted	Human, Mouse, Rabbit, Pig, Chicken, Dog, Horse, Bovine
Host	Rabbit
Clonality	Polyclonal
Calculated MW	74060

Additional Information

Gene ID	23598
Alias Symbol Other Names	MAZR, PATZ, RIAZ, ZBTB19, ZNF278, ZSG, dj400N23 POZ-, AT hook-, and zinc finger-containing protein 1, BTB/POZ domain zinc finger transcription factor, Protein kinase A RI subunit alpha-associated protein, Zinc finger and BTB domain-containing protein 19, Zinc finger protein 278, Zinc finger sarcoma gene protein, PATZ1, PATZ, RIAZ, ZBTB19, ZNF278, ZSG
Format	Liquid. Purified antibody supplied in 1x PBS buffer with 0.09% (w/v) sodium azide and 2% sucrose.
Reconstitution & Storage	Add 50 ul of distilled water. Final anti-PATZ1 antibody concentration is 1 mg/ml in PBS buffer with 2% sucrose. For longer periods of storage, store at 20°C. Avoid repeat freeze-thaw cycles.
Precautions	PATZ1 antibody - middle region is for research use only and not for use in diagnostic or therapeutic procedures.

Protein Information

Name	PATZ1
Synonyms	PATZ, RIAZ, ZBTB19, ZNF278, ZSG
Function	Transcriptional regulator that plays a role in many biological processes such as embryogenesis, senescence, T-cell development or neurogenesis (PubMed: 10713105 , PubMed: 25755280 , PubMed: 31875552). Interacts with the TP53 protein to control genes that are important in proliferation and in the DNA-damage response. Mechanistically, the interaction inhibits the DNA

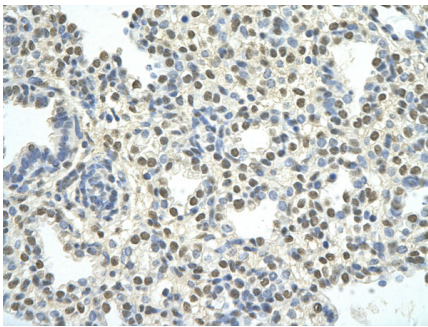
binding and transcriptional activity of TP53/p53 (PubMed:[25755280](#)). Part of the transcriptional network modulating regulatory T-cell development and controls the generation of the regulatory T-cell pool under homeostatic conditions (PubMed:[31875552](#)).

Cellular Location	Nucleus.
Tissue Location	Ubiquitous.

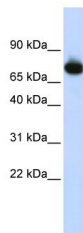
References

Fedele,M., (2008) J. Pathol. 215 (1), 39-47 Reconstitution and Storage:For short term use, store at 2-8C up to 1 week. For long term storage, store at -20C in small aliquots to prevent freeze-thaw cycles.

Images



Rabbit Anti-PATZ1 antibody
Paraffin Embedded Tissue: Human Lung cell
Cellular Data: alveolar cell
Antibody Concentration: 4.0-8.0 µg/ml
Magnification: 400X



WB Suggested Anti-PATZ1 Antibody Titration: 0.2-1 µg/ml
ELISA Titer: 1:1562500
Positive Control: HepG2 cell lysate
PATZ1 is strongly supported by BioGPS gene expression data to be expressed in Human HepG2 cells

Please note: All products are 'FOR RESEARCH USE ONLY. NOT FOR USE IN DIAGNOSTIC OR THERAPEUTIC PROCEDURES'.