

# TRIM35 antibody - C-terminal region

Rabbit Polyclonal Antibody

Catalog # AI11503

## Product Information

---

<b>Application</b>	WB
<b>Primary Accession</b>	<a href="#">Q9UPQ4</a>
<b>Other Accession</b>	<a href="#">NM_015066</a> , <a href="#">NP_055881</a>
<b>Reactivity</b>	Human, Mouse, Rat, Rabbit, Pig, Dog, Horse, Bovine, Yeast
<b>Predicted</b>	Mouse, Rat, Rabbit, Pig, Chicken, Dog
<b>Host</b>	Rabbit
<b>Clonality</b>	Polyclonal
<b>Calculated MW</b>	56540

## Additional Information

---

<b>Gene ID</b>	23087
<b>Other Names</b>	Tripartite motif-containing protein 35, Hemopoietic lineage switch protein 5, TRIM35, HLS5, KIAA1098
<b>Format</b>	Liquid. Purified antibody supplied in 1x PBS buffer with 0.09% (w/v) sodium azide and 2% sucrose.
<b>Reconstitution &amp; Storage</b>	Add 100 ul of distilled water. Final anti-TRIM35 antibody concentration is 1 mg/ml in PBS buffer with 2% sucrose. For longer periods of storage, store at 20°C. Avoid repeat freeze-thaw cycles.
<b>Precautions</b>	TRIM35 antibody - C-terminal region is for research use only and not for use in diagnostic or therapeutic procedures.

## Protein Information

---

<b>Name</b>	TRIM35
<b>Synonyms</b>	HLS5, KIAA1098
<b>Function</b>	E3 ubiquitin-protein ligase that participates in multiple biological processes including cell death, glucose metabolism, and in particular, the innate immune response. Mediates 'Lys-63'-linked polyubiquitination of TRAF3 thereby promoting type I interferon production via RIG-I signaling pathway (PubMed: <a href="#">32562145</a> ). Can also catalyze 'Lys-48'-linked polyubiquitination and proteasomal degradation of viral proteins such as influenza virus PB2 (PubMed: <a href="#">32562145</a> ). Acts as a negative feedback regulator of TLR7- and TLR9-triggered signaling. Mechanistically, promotes the 'Lys-48'-linked ubiquitination of IRF7 and induces its degradation via a

proteasome-dependent pathway (PubMed:[25907537](#)). Reduces FGFR1-dependent tyrosine phosphorylation of PKM, inhibiting PKM-dependent lactate production, glucose metabolism, and cell growth (PubMed:[25263439](#)).

#### Cellular Location

Cytoplasm. Nucleus. Note=Found predominantly in cytoplasm with a granular distribution. Found in punctuate nuclear bodies (By similarity)

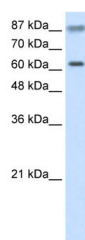
## References

---

Lalonde,J.P., (2004) J. Biol. Chem. 279 (9), 8181-8189  
Reconstitution and Storage:For short term use, store at 2-8C up to 1 week. For long term storage, store at -20C in small aliquots to prevent freeze-thaw cycles.

## Images

---



WB Suggested Anti-TRIM35 Antibody Titration: 2.5µg/ml  
Positive Control: HepG2 cell lysate

Please note: All products are 'FOR RESEARCH USE ONLY. NOT FOR USE IN DIAGNOSTIC OR THERAPEUTIC PROCEDURES'.