

SETBP1 antibody - middle region

Rabbit Polyclonal Antibody
Catalog # AI11505

Product Information

Application	WB
Primary Accession	Q9Y6X0
Other Accession	NM_015559 , NP_056374
Reactivity	Human, Mouse, Rabbit, Pig, Horse, Bovine
Predicted	Mouse, Rat, Rabbit, Pig, Horse, Bovine
Host	Rabbit
Clonality	Polyclonal
Calculated MW	175008

Additional Information

Gene ID	26040
Alias Symbol	KIAA0437, SEB
Other Names	SET-binding protein, SEB, SETBP1, KIAA0437
Format	Liquid. Purified antibody supplied in 1x PBS buffer with 0.09% (w/v) sodium azide and 2% sucrose.
Reconstitution & Storage	Add 50 ul of distilled water. Final anti-SETBP1 antibody concentration is 1 mg/ml in PBS buffer with 2% sucrose. For longer periods of storage, store at 20°C. Avoid repeat freeze-thaw cycles.
Precautions	SETBP1 antibody - middle region is for research use only and not for use in diagnostic or therapeutic procedures.

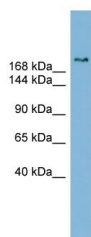
Protein Information

Name	SETBP1
Synonyms	KIAA0437
Cellular Location	Nucleus.
Tissue Location	Expressed in numerous tissues. Expressed at low levels in myeloid and monocytic cells as well as in CD34+ cells; expression levels are higher in myeloid malignancies

References

Ott, M.G., (2006) Nat. Med. 12 (4), 401-409 Reconstitution and Storage: For short term use, store at 2-8C up to 1 week. For long term storage, store at -20C in small aliquots to prevent freeze-thaw cycles.

Images



WB Suggested Anti-SETBP1 Antibody Titration: 0.2-1
 $\mu\text{g/ml}$
ELISA Titer: 1:1562500
Positive Control: Human Stomach

Please note: All products are 'FOR RESEARCH USE ONLY. NOT FOR USE IN DIAGNOSTIC OR THERAPEUTIC PROCEDURES'.