

# Pparg Antibody - C-terminal region

Rabbit Polyclonal Antibody

Catalog # AI11508

## Product Information

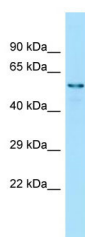
|                          |  |
|--------------------------|--|
| <b>Application</b>       | WB   |
| <b>Primary Accession</b> | <a href="#">O88275-2</a>   |
| <b>Other Accession</b>   | <a href="#">NM_001145366</a> , <a href="#">NP_001138838</a>                |
| <b>Reactivity</b>        | Human, Mouse, Rat, Rabbit, Zebrafish, Pig, Goat, Dog, Horse, Bovine, Sheep |
| <b>Predicted</b>         | Human, Mouse, Rat, Pig, Goat, Dog, Horse, Bovine, Sheep                    |
| <b>Host</b>              | Rabbit   |
| <b>Clonality</b>         | Polyclonal   |
| <b>Calculated MW</b>     | 52 kDa   |

## Additional Information

|                                     |  |
|-------------------------------------|--|
| <b>Format</b>                       | Liquid. Purified antibody supplied in 1x PBS buffer with 0.09% (w/v) sodium azide and 2% sucrose.  |
| <b>Reconstitution &amp; Storage</b> | Add 50 ul of distilled water. Final anti-Pparg antibody concentration is 1 mg/ml in PBS buffer with 2% sucrose. For longer periods of storage, store at 20°C. Avoid repeat freeze-thaw cycles. |
| <b>Precautions</b>                  | Pparg Antibody - C-terminal region is for research use only and not for use in diagnostic or therapeutic procedures.   |

## Protein Information

## Images



Host: Rabbit  
Target Name: Pparg  
Sample Tissue: Rat Kidney lysates  
Antibody Dilution: 1.0µg/ml

Please note: All products are 'FOR RESEARCH USE ONLY. NOT FOR USE IN DIAGNOSTIC OR THERAPEUTIC PROCEDURES'.