

KLHL5 antibody - N-terminal region

Rabbit Polyclonal Antibody

Catalog # AI11512

Product Information

Application	WB
Primary Accession	Q96PQ7
Other Accession	NM_001007075 , NP_001007076
Reactivity	Human, Mouse, Rat, Rabbit, Zebrafish, Pig, Dog, Horse, Bovine
Predicted	Human, Mouse, Rat, Rabbit, Bovine
Host	Rabbit
Clonality	Polyclonal
Calculated MW	84457

Additional Information

Gene ID	51088
Other Names	Kelch-like protein 5, KLHL5
Format	Liquid. Purified antibody supplied in 1x PBS buffer with 0.09% (w/v) sodium azide and 2% sucrose.
Reconstitution & Storage	Add 50 ul of distilled water. Final anti-KLHL5 antibody concentration is 1 mg/ml in PBS buffer with 2% sucrose. For longer periods of storage, store at 20°C. Avoid repeat freeze-thaw cycles.
Precautions	KLHL5 antibody - N-terminal region is for research use only and not for use in diagnostic or therapeutic procedures.

Protein Information

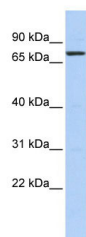
Name	KLHL5
Cellular Location	Cytoplasm, cytoskeleton.
Tissue Location	Expressed in adrenal gland, ovary and thyroid gland and less abundantly in lymph node, prostate, spinal cord, testis and trachea

References

Hillier, L.W., (2005) Nature 434 (7034), 724-731
Reconstitution and Storage: For short term use, store at 2-8°C up to 1 week. For long term storage, store at -20°C in small aliquots to prevent freeze-thaw cycles.
Publications: Nagalla, S. et al. Platelet microRNA-mRNA coexpression profiles correlate with platelet

reactivity. Blood 117, 5189-97 (2011). WB, Mouse, Bovine, Dog, Pig, H, Guinea pig, Rat, Human, Rabbit, Zebrafish21415270

Images



WB Suggested Anti-KLHL5 Antibody Titration: 0.2-1 µg/ml
ELISA Titer: 1:1562500
Positive Control: Hela cell lysate

Please note: All products are 'FOR RESEARCH USE ONLY. NOT FOR USE IN DIAGNOSTIC OR THERAPEUTIC PROCEDURES'.