

# KLHL5 antibody - middle region

Rabbit Polyclonal Antibody

Catalog # AI11513

## Product Information

---

<b>Application</b>	WB
<b>Primary Accession</b>	<a href="#">Q96PQ7</a>
<b>Other Accession</b>	<a href="#">NM_015990</a> , <a href="#">NP_057074</a>
<b>Reactivity</b>	Human, Mouse, Rat, Rabbit, Zebrafish, Dog, Horse, Bovine
<b>Predicted</b>	Human, Mouse, Rat, Zebrafish, Chicken, Bovine
<b>Host</b>	Rabbit
<b>Clonality</b>	Polyclonal
<b>Calculated MW</b>	84457

## Additional Information

---

<b>Gene ID</b>	51088
<b>Other Names</b>	Kelch-like protein 5, KLHL5
<b>Format</b>	Liquid. Purified antibody supplied in 1x PBS buffer with 0.09% (w/v) sodium azide and 2% sucrose.
<b>Reconstitution &amp; Storage</b>	Add 50 ul of distilled water. Final anti-KLHL5 antibody concentration is 1 mg/ml in PBS buffer with 2% sucrose. For longer periods of storage, store at 20°C. Avoid repeat freeze-thaw cycles.
<b>Precautions</b>	KLHL5 antibody - middle region is for research use only and not for use in diagnostic or therapeutic procedures.

## Protein Information

---

<b>Name</b>	KLHL5
<b>Cellular Location</b>	Cytoplasm, cytoskeleton.
<b>Tissue Location</b>	Expressed in adrenal gland, ovary and thyroid gland and less abundantly in lymph node, prostate, spinal cord, testis and trachea

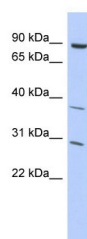
## References

---

Hillier, L.W., (2005) Nature 434 (7034), 724-731  
Reconstitution and Storage: For short term use, store at 2-8°C up to 1 week. For long term storage, store at -20°C in small aliquots to prevent freeze-thaw cycles.

## Images

---



WB Suggested Anti-KLHL5 Antibody Titration: 0.2-1  $\mu$ g/ml  
ELISA Titer: 1:312500  
Positive Control: THP-1 cell lysate

Please note: All products are 'FOR RESEARCH USE ONLY. NOT FOR USE IN DIAGNOSTIC OR THERAPEUTIC PROCEDURES'.