

Klf3 Antibody - N-terminal region

Rabbit Polyclonal Antibody

Catalog # AI11520

Product Information

Application	WB
Primary Accession	Q60980
Other Accession	NM_008453 , NP_032479
Reactivity	Human, Mouse, Rat, Rabbit, Pig, Dog, Horse, Bovine
Predicted	Human, Mouse, Rat, Rabbit, Horse, Bovine
Host	Rabbit
Clonality	Polyclonal
Calculated MW	38561

Additional Information

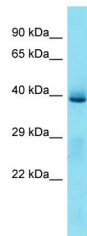
Gene ID	16599
Alias Symbol	9930027G08Rik, AL024007, Bklf, Tef-2
Other Names	Krueppel-like factor 3, Basic krueppel-like factor, CACCC-box-binding protein BKLF, TEF-2, Klf3, Bklf
Format	Liquid. Purified antibody supplied in 1x PBS buffer with 0.09% (w/v) sodium azide and 2% sucrose.
Reconstitution & Storage	Add 50 ul of distilled water. Final anti-Klf3 antibody concentration is 1 mg/ml in PBS buffer with 2% sucrose. For longer periods of storage, store at 20°C. Avoid repeat freeze-thaw cycles.
Precautions	Klf3 Antibody - N-terminal region is for research use only and not for use in diagnostic or therapeutic procedures.

Protein Information

Name	Klf3
Synonyms	Bklf
Function	Binds to the CACCC box of erythroid cell-expressed genes. May play a role in hematopoiesis.
Cellular Location	Nucleus.
Tissue Location	In 8.5 day embryos, expressed in midbrain, anterior hindbrain and ventral forebrain. In 9 day embryos, expressed throughout ventral anterior half of embryo including midbrain-hindbrain junction, ventral midbrain,

diencephalon and forebrain. At 10.5 days, distribution is more widespread with expression also found in developing limb buds. Widely expressed in the adult

Images



Host: Rabbit
Target Name: Klf3
Sample Tissue: Mouse Liver lysates
Antibody Dilution: 1.0µg/ml

Please note: All products are 'FOR RESEARCH USE ONLY. NOT FOR USE IN DIAGNOSTIC OR THERAPEUTIC PROCEDURES'.