

# KLHL3 antibody - N-terminal region

Rabbit Polyclonal Antibody

Catalog # AI11522

## Product Information

Application	WB
Primary Accession	<a href="#">Q9UH77</a>
Other Accession	<a href="#">NM_017415</a> , <a href="#">NP_059111</a>
Reactivity	Human, Rat, Rabbit, Dog, Bovine
Predicted	Human, Rabbit, Dog, Bovine
Host	Rabbit
Clonality	Polyclonal
Calculated MW	64970

## Additional Information

Gene ID	26249
Alias Symbol	PHA2D
Other Names	Kelch-like protein 3, KLHL3, KIAA1129
Format	Liquid. Purified antibody supplied in 1x PBS buffer with 0.09% (w/v) sodium azide and 2% sucrose.
Reconstitution & Storage	Add 100 ul of distilled water. Final anti-KLHL3 antibody concentration is 1 mg/ml in PBS buffer with 2% sucrose. For longer periods of storage, store at 20°C. Avoid repeat freeze-thaw cycles.
Precautions	KLHL3 antibody - N-terminal region is for research use only and not for use in diagnostic or therapeutic procedures.

## Protein Information

Name	KLHL3 {ECO:0000303   PubMed:10843806, ECO:0000312   HGNC:HGNC:6354}
Function	Substrate-specific adapter of a BCR (BTB-CUL3-RBX1) E3 ubiquitin ligase complex that acts as a regulator of ion transport in the distal nephron (PubMed: <a href="#">14528312</a> , PubMed: <a href="#">22406640</a> , PubMed: <a href="#">23387299</a> , PubMed: <a href="#">23453970</a> , PubMed: <a href="#">23576762</a> , PubMed: <a href="#">23665031</a> , PubMed: <a href="#">25313067</a> , PubMed: <a href="#">35093948</a> ). The BCR(KLHL3) complex acts by mediating ubiquitination and degradation of WNK1 and WNK4, two activators of Na- Cl cotransporter SLC12A3/NCC in distal convoluted tubule cells of kidney, thereby regulating NaCl reabsorption (PubMed: <a href="#">23387299</a> , PubMed: <a href="#">23453970</a> , PubMed: <a href="#">23576762</a> , PubMed: <a href="#">23665031</a> , PubMed: <a href="#">25313067</a> , PubMed: <a href="#">35093948</a> ). The BCR(KLHL3) complex also mediates ubiquitination and degradation of WNK3 (PubMed: <a href="#">35179207</a> ). The

BCR(KLHL3) complex also mediates ubiquitination of CLDN8, a tight-junction protein required for paracellular chloride transport in the kidney, leading to its degradation (By similarity).

<b>Cellular Location</b>	Cytoplasm, cytosol. Cytoplasm, cytoskeleton
<b>Tissue Location</b>	Widely expressed..

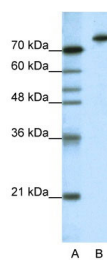
## References

---

Lai,F., et al., (2000) Genomics 66 (1), 65-75  
Reconstitution and Storage:For short term use, store at 2-8C up to 1 week. For long term storage, store at -20C in small aliquots to prevent freeze-thaw cycles.

## Images

---



WB Suggested Anti-KLHL3 Antibody Titration: 1.25µg/ml  
ELISA Titer: 1:62500  
Positive Control: HepG2 cell lysate

Please note: All products are 'FOR RESEARCH USE ONLY. NOT FOR USE IN DIAGNOSTIC OR THERAPEUTIC PROCEDURES'.