

PBRM1 antibody - N-terminal region

Rabbit Polyclonal Antibody

Catalog # AI11529

Product Information

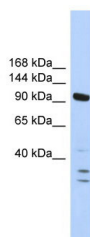
| | |
|--------------------------|---|
| Application | WB |
| Primary Accession | Q86U86-6 |
| Other Accession | NM_181041 , NP_851384 |
| Reactivity | Human, Mouse, Rat, Rabbit, Zebrafish, Dog, Horse, Bovine |
| Predicted | Human, Mouse, Rat, Rabbit, Zebrafish, Chicken, Dog, Horse, Bovine |
| Host | Rabbit |
| Clonality | Polyclonal |
| Calculated MW | 99 kDa |

Additional Information

| | |
|-------------------------------------|--|
| Alias Symbol | BAF180, MGC156155, MGC156156, PB1 |
| Format | Liquid. Purified antibody supplied in 1x PBS buffer with 0.09% (w/v) sodium azide and 2% sucrose. |
| Reconstitution & Storage | Add 50 ul of distilled water. Final anti-PBRM1 antibody concentration is 1 mg/ml in PBS buffer with 2% sucrose. For longer periods of storage, store at 20°C. Avoid repeat freeze-thaw cycles. |
| Precautions | PBRM1 antibody - N-terminal region is for research use only and not for use in diagnostic or therapeutic procedures. |

Protein Information

Images



WB Suggested Anti-PBRM1 Antibody Titration: 0.2-1 µg/ml
ELISA Titer: 1:1562500
Positive Control: MCF7 cell lysate