

PBRM1 antibody - middle region

Rabbit Polyclonal Antibody

Catalog # AI11530

Product Information

Application	WB
Primary Accession	Q86U86-4
Other Accession	NM_018313 , NP_060783
Reactivity	Human, Mouse, Rat, Zebrafish, Dog, Horse, Bovine
Predicted	Human, Mouse, Rat, Rabbit, Zebrafish, Pig, Chicken, Dog, Horse, Bovine
Host	Rabbit
Clonality	Polyclonal
Calculated MW	181 KDa

Additional Information

Alias Symbol	BAF180, MGC156155, MGC156156, PB1
Format	Liquid. Purified antibody supplied in 1x PBS buffer with 0.09% (w/v) sodium azide and 2% sucrose.
Reconstitution & Storage	Add 50 ul of distilled water. Final anti-PBRM1 antibody concentration is 1 mg/ml in PBS buffer with 2% sucrose. For longer periods of storage, store at 20°C. Avoid repeat freeze-thaw cycles.
Precautions	PBRM1 antibody - middle region is for research use only and not for use in diagnostic or therapeutic procedures.

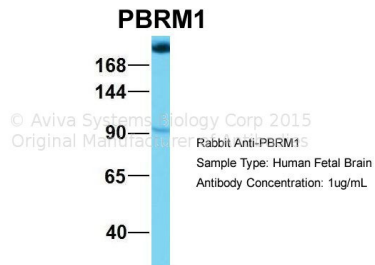
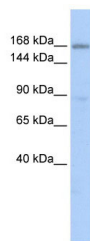
Protein Information

References

Xia,W., (2008) Cancer Res. 68 (6), 1667-1674 Reconstitution and Storage:For short term use, store at 2-8C up to 1 week. For long term storage, store at -20C in small aliquots to prevent freeze-thaw cycles.

Images

WB Suggested Anti-PBRM1 Antibody Titration: 0.2-1 µg/ml
ELISA Titer: 1:1562500
Positive Control: HepG2 cell lysate
PBRM1 is supported by BioGPS gene expression data to be expressed in HepG2



Host: Rabbit
Target Name: NOP56
Sample Tissue: Human Fetal Brain
Antibody Dilution: 1.0µg/ml

Please note: All products are 'FOR RESEARCH USE ONLY. NOT FOR USE IN DIAGNOSTIC OR THERAPEUTIC PROCEDURES'.