

# HMG20A antibody - N-terminal region

Rabbit Polyclonal Antibody

Catalog # AI11533

## Product Information

---

<b>Application</b>	WB
<b>Primary Accession</b>	<a href="#">Q9NP66</a>
<b>Other Accession</b>	<a href="#">NM_018200</a> , <a href="#">NP_060670</a>
<b>Reactivity</b>	Human, Rat, Rabbit, Pig, Dog, Horse, Bovine
<b>Predicted</b>	Human, Rabbit, Pig, Dog, Bovine
<b>Host</b>	Rabbit
<b>Clonality</b>	Polyclonal
<b>Calculated MW</b>	40144

## Additional Information

---

<b>Gene ID</b>	10363
<b>Alias Symbol</b>	FLJ10739, HMGX1, HMGXB1
<b>Other Names</b>	High mobility group protein 20A, HMG box-containing protein 20A, HMG domain-containing protein 1, HMG domain-containing protein HMGX1, HMG20A, HMGX1, HMGXB1
<b>Format</b>	Liquid. Purified antibody supplied in 1x PBS buffer with 0.09% (w/v) sodium azide and 2% sucrose.
<b>Reconstitution &amp; Storage</b>	Add 50 ul of distilled water. Final anti-HMG20A antibody concentration is 1 mg/ml in PBS buffer with 2% sucrose. For longer periods of storage, store at 20°C. Avoid repeat freeze-thaw cycles.
<b>Precautions</b>	HMG20A antibody - N-terminal region is for research use only and not for use in diagnostic or therapeutic procedures.

## Protein Information

---

<b>Name</b>	HMG20A
<b>Synonyms</b>	HMGX1, HMGXB1
<b>Function</b>	Plays a role in neuronal differentiation as chromatin- associated protein. Acts as inhibitor of HMG20B. Overcomes the repressive effects of the neuronal silencer REST and induces the activation of neuronal-specific genes. Involved in the recruitment of the histone methyltransferase KMT2A/MLL1 and consequent increased methylation of histone H3 lysine 4 (By similarity).
<b>Cellular Location</b>	Nucleus {ECO:0000255 PROSITE-ProRule:PRU00267}.

**Tissue Location**

Ubiquitous..

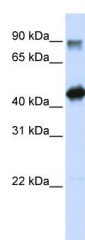
**References**

---

Colland,F., (2004) Genome Res. 14 (7), 1324-1332 Reconstitution and Storage:For short term use, store at 2-8C up to 1 week. For long term storage, store at -20C in small aliquots to prevent freeze-thaw cycles.

**Images**

---



WB Suggested Anti-HMG20A Antibody Titration: 0.2-1  
µg/ml  
ELISA Titer: 1:1562500  
Positive Control: Transfected 293T

Please note: All products are 'FOR RESEARCH USE ONLY. NOT FOR USE IN DIAGNOSTIC OR THERAPEUTIC PROCEDURES'.