

KLHL26 antibody - C-terminal region

Rabbit Polyclonal Antibody

Catalog # AI11537

Product Information

Application	WB, IHC
Primary Accession	Q53HC5
Other Accession	NM_018316 , NP_060786
Reactivity	Human, Mouse, Rat, Rabbit, Zebrafish, Pig, Horse, Bovine
Predicted	Mouse, Rat, Rabbit, Zebrafish, Pig, Chicken, Bovine
Host	Rabbit
Clonality	Polyclonal
Calculated MW	68139

Additional Information

Gene ID	55295
Other Names	Kelch-like protein 26, KLHL26
Format	Liquid. Purified antibody supplied in 1x PBS buffer with 0.09% (w/v) sodium azide and 2% sucrose.
Reconstitution & Storage	Add 100 ul of distilled water. Final anti-KLHL26 antibody concentration is 1 mg/ml in PBS buffer with 2% sucrose. For longer periods of storage, store at 20°C. Avoid repeat freeze-thaw cycles.
Precautions	KLHL26 antibody - C-terminal region is for research use only and not for use in diagnostic or therapeutic procedures.

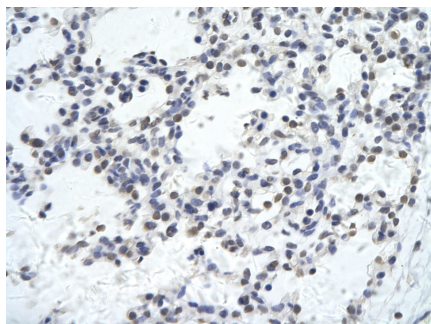
Protein Information

Name	KLHL26
Function	May play a role in endo(sarco)plasmic reticulum (ER/SR) mitochondrial signaling (PubMed: 37204873). May be part of the ubiquitin-proteasome system (UPS) and affect ubiquitination and degradation of target substrates in cardiomyocytes (PubMed: 37204873).

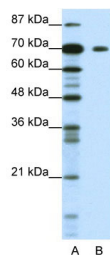
References

Suzuki,Y., Gene 200 (1-2), 149-156 (1997)Reconstitution and Storage:For short term use, store at 2-8C up to 1 week. For long term storage, store at -20C in small aliquots to prevent freeze-thaw cycles.

Images



Rabbit Anti-KLHL26 antibody
Catalog Number: AI11537
Paraffin Embedded Tissue: Human Lung cell
Cellular Data: Epithelial cells of renal tubule
Antibody Concentration: 4.0-8.0 $\mu\text{g/ml}$
Magnification: 400X



WB Suggested Anti-KLHL26 Antibody Titration: 1.25 $\mu\text{g/ml}$
ELISA Titer: 1:1562500
Positive Control: Jurkat cell lysate
KLHL26 is supported by BioGPS gene expression data to be expressed in Jurkat

Please note: All products are 'FOR RESEARCH USE ONLY. NOT FOR USE IN DIAGNOSTIC OR THERAPEUTIC PROCEDURES'.