

# HOXC5 antibody - middle region

Rabbit Polyclonal Antibody

Catalog # AI11541

## Product Information

---

<b>Application</b>	WB
<b>Primary Accession</b>	<a href="#">Q00444</a>
<b>Other Accession</b>	<a href="#">NM_018953</a> , <a href="#">NP_061826</a>
<b>Reactivity</b>	Human, Mouse, Rat, Rabbit, Zebrafish, Dog, Horse, Bovine
<b>Predicted</b>	Rat, Zebrafish, Pig, Dog, Bovine
<b>Host</b>	Rabbit
<b>Clonality</b>	Polyclonal
<b>Calculated MW</b>	24976

## Additional Information

---

<b>Gene ID</b>	3222
<b>Alias Symbol</b>	CP11, HOX3, HOX3D
<b>Other Names</b>	Homeobox protein Hox-C5, Homeobox protein CP11, Homeobox protein Hox-3D, HOXC5, HOX3D
<b>Format</b>	Liquid. Purified antibody supplied in 1x PBS buffer with 0.09% (w/v) sodium azide and 2% sucrose.
<b>Reconstitution &amp; Storage</b>	Add 50 ul of distilled water. Final anti-HOXC5 antibody concentration is 1 mg/ml in PBS buffer with 2% sucrose. For longer periods of storage, store at 20°C. Avoid repeat freeze-thaw cycles.
<b>Precautions</b>	HOXC5 antibody - middle region is for research use only and not for use in diagnostic or therapeutic procedures.

## Protein Information

---

<b>Name</b>	HOXC5
<b>Synonyms</b>	HOX3D
<b>Function</b>	Sequence-specific transcription factor which is part of a developmental regulatory system that provides cells with specific positional identities on the anterior-posterior axis.
<b>Cellular Location</b>	Nucleus.

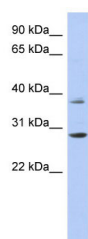
## References

---

Gong,L.G., (2005) Zhonghua Yi Xue Yi Chuan Xue Za Zhi 22 (5), 497-501 Reconstitution and Storage:For short term use, store at 2-8C up to 1 week. For long term storage, store at -20C in small aliquots to prevent freeze-thaw cycles.

## Images

---



WB Suggested Anti-HOXC5 Antibody Titration: 0.2-1 µg/ml  
ELISA Titer: 1:312500  
Positive Control: ACHN cell lysate

Please note: All products are 'FOR RESEARCH USE ONLY. NOT FOR USE IN DIAGNOSTIC OR THERAPEUTIC PROCEDURES'.