

SCAPER antibody - N-terminal region

Rabbit Polyclonal Antibody

Catalog # AI11554

Product Information

Application	WB
Primary Accession	Q9BY12
Other Accession	NM_020843 , NP_065894
Reactivity	Human, Mouse, Rat, Rabbit, Zebrafish, Pig, Dog, Horse, Bovine
Predicted	Human, Mouse, Rat, Zebrafish, Pig, Chicken, Bovine
Host	Rabbit
Clonality	Polyclonal
Calculated MW	158287

Additional Information

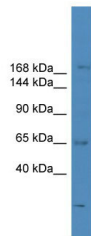
Gene ID	49855
Alias Symbol Other Names	FLJ31533, FLJ31953, FLJ46212, KIAA1454, MSTP063, ZNF291, Zfp291 S phase cyclin A-associated protein in the endoplasmic reticulum, S phase cyclin A-associated protein in the ER, Zinc finger protein 291, SCAPER, KIAA1454, ZNF291
Format	Liquid. Purified antibody supplied in 1x PBS buffer with 0.09% (w/v) sodium azide and 2% sucrose.
Reconstitution & Storage	Add 50 ul of distilled water. Final anti-SCAPER antibody concentration is 1 mg/ml in PBS buffer with 2% sucrose. For longer periods of storage, store at 20°C. Avoid repeat freeze-thaw cycles.
Precautions	SCAPER antibody - N-terminal region is for research use only and not for use in diagnostic or therapeutic procedures.

Protein Information

Name	SCAPER (HGNC:13081)
Synonyms	KIAA1454, ZNF291
Function	CCNA2/CDK2 regulatory protein that transiently maintains CCNA2 in the cytoplasm.
Cellular Location	Endoplasmic reticulum. Nucleus Note=Predominantly located in the endoplasmic reticulum, only a small portion is detected in the nucleus
Tissue Location	Widely expressed with high expression in testis. Isoform 1 is detected in

various tissues, including retina, fetal and adult brain. Isoform 2 is expressed in the retina at high levels, and in the brain at very low levels (PubMed:28794130)

Images



WB Suggested Anti-SCAPER Antibody Titration: 0.2-1
µg/ml
ELISA Titer: 1:312500
Positive Control: ACHN cell lysate

Please note: All products are 'FOR RESEARCH USE ONLY. NOT FOR USE IN DIAGNOSTIC OR THERAPEUTIC PROCEDURES'.