

# LZTS1 antibody - C-terminal region

Rabbit Polyclonal Antibody

Catalog # AI11559

## Product Information

---

|                          |   |
|--------------------------|---|
| <b>Application</b>       | WB  |
| <b>Primary Accession</b> | <a href="#">Q9Y250</a>                                      |
| <b>Other Accession</b>   | <a href="#">NM_021020</a> , <a href="#">NP_066300</a>       |
| <b>Reactivity</b>        | Human, Mouse, Rat, Rabbit, Pig, Dog, Horse, Bovine          |
| <b>Predicted</b>         | Human, Mouse, Rat, Rabbit, Pig, Chicken, Dog, Horse, Bovine |
| <b>Host</b>              | Rabbit  |
| <b>Clonality</b>         | Polyclonal  |
| <b>Calculated MW</b>     | 66613   |

## Additional Information

---

|                                     |   |
|-------------------------------------|---|
| <b>Gene ID</b>                      | 11178   |
| <b>Alias Symbol</b>                 | F37, FEZ1   |
| <b>Other Names</b>                  | Leucine zipper putative tumor suppressor 1, F37/esophageal cancer-related gene-coding leucine-zipper motif, Fez1, LZTS1, FEZ1   |
| <b>Format</b>                       | Liquid. Purified antibody supplied in 1x PBS buffer with 0.09% (w/v) sodium azide and 2% sucrose.   |
| <b>Reconstitution &amp; Storage</b> | Add 100 ul of distilled water. Final anti-LZTS1 antibody concentration is 1 mg/ml in PBS buffer with 2% sucrose. For longer periods of storage, store at 20°C. Avoid repeat freeze-thaw cycles. |
| <b>Precautions</b>                  | LZTS1 antibody - C-terminal region is for research use only and not for use in diagnostic or therapeutic procedures.  |

## Protein Information

---

|                          |   |
|--------------------------|---|
| <b>Name</b>              | LZTS1   |
| <b>Synonyms</b>          | FEZ1  |
| <b>Function</b>          | Involved in the regulation of cell growth. May stabilize the active CDC2-cyclin B1 complex and thereby contribute to the regulation of the cell cycle and the prevention of uncontrolled cell proliferation. May act as a tumor suppressor.   |
| <b>Cellular Location</b> | Cytoplasm. Cell membrane. Cell projection, dendritic spine Postsynaptic density. Synapse Note=Associated with the plasma membrane and with microtubules Detected in dendritic spines, especially in the postsynaptic density (By similarity). |

## Tissue Location

Highly expressed in testis, prostate, spleen, thymus, ovary and brain. Detected at lower levels in heart, placenta, small intestine, colon, liver, kidney, skeletal muscle and pancreas Not detectable in primary tumors from breast and prostate and in many cancer cell lines.

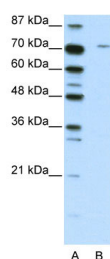
## References

---

Hawkins,G.A., et al., (2002) Cancer Genet. Cytogenet. 137 (1), 1-7  
Reconstitution and Storage:For short term use, store at 2-8C up to 1 week. For long term storage, store at -20C in small aliquots to prevent freeze-thaw cycles.

## Images

---



WB Suggested Anti-LZTS1 Antibody Titration: 2.5µg/ml  
ELISA Titer: 1:1562500  
Positive Control: Jurkat cell lysate

Please note: All products are 'FOR RESEARCH USE ONLY. NOT FOR USE IN DIAGNOSTIC OR THERAPEUTIC PROCEDURES'.