

UTX antibody - middle region

Rabbit Polyclonal Antibody

Catalog # AI11560

Product Information

Application	WB
Primary Accession	O15550
Other Accession	NM_021140 , NP_066963
Reactivity	Human, Mouse, Rat, Rabbit, Zebrafish, Pig, Dog, Horse, Bovine
Predicted	Human, Zebrafish
Host	Rabbit
Clonality	Polyclonal
Calculated MW	154177

Additional Information

Gene ID	7403
Alias Symbol Other Names	DKFZp686A03225, MGC141941, bA386N14.2, UTX, KABUK2 Lysine-specific demethylase 6A, 1.14.11.-, Histone demethylase UTX, Ubiquitously-transcribed TPR protein on the X chromosome, Ubiquitously-transcribed X chromosome tetratricopeptide repeat protein, KDM6A, UTX
Format	Liquid. Purified antibody supplied in 1x PBS buffer with 0.09% (w/v) sodium azide and 2% sucrose.
Reconstitution & Storage	Add 50 ul of distilled water. Final anti-UTX antibody concentration is 1 mg/ml in PBS buffer with 2% sucrose. For longer periods of storage, store at 20°C. Avoid repeat freeze-thaw cycles.
Precautions	UTX antibody - middle region is for research use only and not for use in diagnostic or therapeutic procedures.

Protein Information

Name	KDM6A
Synonyms	UTX
Function	Histone demethylase that specifically demethylates 'Lys-27' of histone H3, thereby playing a central role in histone code (PubMed: 17713478 , PubMed: 17761849 , PubMed: 17851529). Demethylates trimethylated and dimethylated but not monomethylated H3 'Lys-27' (PubMed: 17713478 , PubMed: 17761849 , PubMed: 17851529). Plays a central role in regulation of posterior development, by regulating HOX gene expression

(PubMed:[17851529](#)). Demethylation of 'Lys-27' of histone H3 is concomitant with methylation of 'Lys-4' of histone H3, and regulates the recruitment of the PRC1 complex and monoubiquitination of histone H2A (PubMed:[17761849](#)). Plays a demethylase-independent role in chromatin remodeling to regulate T-box family member-dependent gene expression (By similarity).

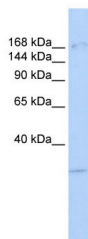
Cellular Location

Nucleus.

References

Hong,S., (2007) Proc. Natl. Acad. Sci. U.S.A. 104 (47), 18439-18444 Reconstitution and Storage:For short term use, store at 2-8C up to 1 week. For long term storage, store at -20C in small aliquots to prevent freeze-thaw cycles.

Images



WB Suggested Anti-UTX Antibody Titration: 0.2-1 µg/ml
ELISA Titer: 1:312500
Positive Control: MCF7 cell lysate
KDM6A is strongly supported by BioGPS gene expression data to be expressed in Human MCF7 cells

Please note: All products are 'FOR RESEARCH USE ONLY. NOT FOR USE IN DIAGNOSTIC OR THERAPEUTIC PROCEDURES'.