

ZFYVE20 antibody - N-terminal region

Rabbit Polyclonal Antibody

Catalog # AI11574

Product Information

Application	WB
Primary Accession	Q9H1K0
Other Accession	NM_022340 , NP_071735
Reactivity	Human, Mouse, Rat, Rabbit, Pig, Dog, Horse, Bovine
Predicted	Human, Mouse, Chicken, Dog, Bovine
Host	Rabbit
Clonality	Polyclonal
Calculated MW	88870

Additional Information

Gene ID	64145
Alias Symbol	FLJ34993, MGC126210, Rabenosyn-5
Other Names	Rabenosyn-5, 110 kDa protein, FYVE finger-containing Rab5 effector protein rabenosyn-5, RAB effector RBSN {ECO:0000312 HGNC:HGNC:20759}, Zinc finger FYVE domain-containing protein 20, RBSN (HGNC:20759)
Format	Liquid. Purified antibody supplied in 1x PBS buffer with 0.09% (w/v) sodium azide and 2% sucrose.
Reconstitution & Storage	Add 50 ul of distilled water. Final anti-ZFYVE20 antibody concentration is 1 mg/ml in PBS buffer with 2% sucrose. For longer periods of storage, store at 20°C. Avoid repeat freeze-thaw cycles.
Precautions	ZFYVE20 antibody - N-terminal region is for research use only and not for use in diagnostic or therapeutic procedures.

Protein Information

Name	RBSN (HGNC:20759)
Function	Rab4/Rab5 effector protein acting in early endocytic membrane fusion and membrane trafficking of recycling endosomes. Required for endosome fusion either homotypically or with clathrin coated vesicles. Plays a role in the lysosomal trafficking of CTSD/cathepsin D from the Golgi to lysosomes. Also promotes the recycling of transferrin directly from early endosomes to the plasma membrane. Binds phospholipid vesicles containing phosphatidylinositol 3-phosphate (PtdInsP3) (PubMed: 11062261 , PubMed: 11788822 , PubMed: 15020713). Plays a role in the recycling of transferrin receptor to the plasma membrane (PubMed: 22308388).

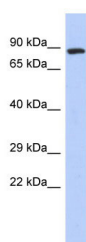
Cellular Location

Cell membrane; Lipid-anchor; Cytoplasmic side. Early endosome membrane; Lipid-anchor. Note=Enriched in endosomes that are in close proximity to clathrin-enriched regions at the cell surface.

References

Beausoleil,S.A., (2006) Nat. Biotechnol. 24 (10), 1285-1292 Reconstitution and Storage:For short term use, store at 2-8C up to 1 week. For long term storage, store at -20C in small aliquots to prevent freeze-thaw cycles.

Images



WB Suggested Anti-ZFYVE20 Antibody Titration: 0.2-1
µg/ml
ELISA Titer: 1:12500
Positive Control: Human Stomach

Please note: All products are 'FOR RESEARCH USE ONLY. NOT FOR USE IN DIAGNOSTIC OR THERAPEUTIC PROCEDURES'.