

# Prrx1 Antibody - C-terminal region

Rabbit Polyclonal Antibody

Catalog # AI11577

## Product Information

---

<b>Application</b>	WB
<b>Primary Accession</b>	<a href="#">P63014</a>
<b>Other Accession</b>	<a href="#">NM_153821</a> , <a href="#">NP_722543</a>
<b>Reactivity</b>	Human, Mouse, Rat, Rabbit, Zebrafish, Dog, Bovine
<b>Predicted</b>	Human, Mouse, Rat, Pig, Dog, Bovine
<b>Host</b>	Rabbit
<b>Clonality</b>	Polyclonal
<b>Calculated MW</b>	27269

## Additional Information

---

<b>Gene ID</b>	266813
<b>Alias Symbol</b>	Pmx1, Prx-1
<b>Other Names</b>	Paired mesoderm homeobox protein 1, Paired-related homeobox protein 1, PRX-1, rHox, Prrx1
<b>Format</b>	Liquid. Purified antibody supplied in 1x PBS buffer with 0.09% (w/v) sodium azide and 2% sucrose.
<b>Reconstitution &amp; Storage</b>	Add 50 ul of distilled water. Final anti-Prrx1 antibody concentration is 1 mg/ml in PBS buffer with 2% sucrose. For longer periods of storage, store at 20°C. Avoid repeat freeze-thaw cycles.
<b>Precautions</b>	Prrx1 Antibody - C-terminal region is for research use only and not for use in diagnostic or therapeutic procedures.

## Protein Information

---

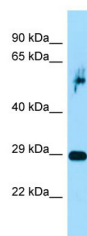
<b>Name</b>	Prrx1
<b>Function</b>	Master transcription factor of stromal fibroblasts for myofibroblastic lineage progression. Orchestrates the functional drift of fibroblasts into myofibroblastic phenotype via TGF-beta signaling by remodeling a super-enhancer landscape. Through this function, plays an essential role in wound healing process. Acts as a transcriptional regulator of muscle creatine kinase (MCK) and so has a role in the establishment of diverse mesodermal muscle types. The protein binds to an A/T-rich element in the muscle creatine enhancer. May play a role in homeostasis and regeneration of bone, white adipose tissue and derm.

## Cellular Location

Nucleus {ECO:0000250|UniProtKB:P63013,  
ECO:0000255|PROSITE-ProRule:PRU00108, ECO:0000255|PROSITE-  
ProRule:PRU00138}

## Images

---



Host: Rabbit

Target Name: Prrx1

Sample Tissue: Rat Pancreas lysates

Antibody Dilution: 1.0µg/ml

Please note: All products are 'FOR RESEARCH USE ONLY. NOT FOR USE IN DIAGNOSTIC OR THERAPEUTIC PROCEDURES'.