

# Foxl2 antibody - C-terminal region

Rabbit Polyclonal Antibody

Catalog # AI11581

## Product Information

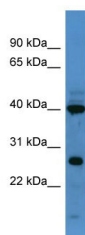
<b>Application</b>	WB
<b>Primary Accession</b>	<a href="#">D4A0S1</a>
<b>Other Accession</b>	<a href="#">XM_001070279</a> , <a href="#">XP_001070279</a>
<b>Reactivity</b>	Human, Mouse, Rat, Rabbit, Pig, Goat, Horse, Bovine
<b>Predicted</b>	Human, Mouse, Rat, Rabbit, Pig, Chicken, Goat, Bovine
<b>Host</b>	Rabbit
<b>Clonality</b>	Polyclonal
<b>Calculated MW</b>	39 KDa

## Additional Information

<b>Alias Symbol</b>	Foxl2
<b>Format</b>	Liquid. Purified antibody supplied in 1x PBS buffer with 0.09% (w/v) sodium azide and 2% sucrose.
<b>Reconstitution &amp; Storage</b>	Add 50 ul of distilled water. Final anti-Foxl2 antibody concentration is 1 mg/ml in PBS buffer with 2% sucrose. For longer periods of storage, store at 20°C. Avoid repeat freeze-thaw cycles.
<b>Precautions</b>	Foxl2 antibody - C-terminal region is for research use only and not for use in diagnostic or therapeutic procedures.

## Protein Information

## Images



WB Suggested Anti-Foxl2 Antibody Titration: 0.2-1 µg/ml  
ELISA Titer: 1:62500  
Positive Control: Rat Liver