

# EBF1 Antibody

Rabbit Polyclonal Antibody

Catalog # AI11582

## Product Information

---

<b>Application</b>	WB, IHC
<b>Primary Accession</b>	<a href="#">Q9UH73</a>
<b>Reactivity</b>	Human, Mouse, Rat, Rabbit, Zebrafish, Pig, Dog, Horse, Bovine
<b>Predicted</b>	Human, Mouse, Rabbit, Zebrafish, Pig, Chicken, Bovine
<b>Host</b>	Rabbit
<b>Clonality</b>	Polyclonal
<b>Calculated MW</b>	64464

## Additional Information

---

<b>Gene ID</b>	1879
<b>Alias Symbol</b>	EBF, COE1, OLF1, O/E-1
<b>Other Names</b>	Transcription factor COE1, O/E-1, OE-1, Early B-cell factor, EBF1, COE1, EBF
<b>Format</b>	Liquid. Purified antibody supplied in 1x PBS buffer with 0.09% (w/v) sodium azide and 2% sucrose.
<b>Reconstitution &amp; Storage</b>	Add 50 ul of distilled water. Final anti-EBF1 antibody concentration is 1 mg/ml in PBS buffer with 2% sucrose. For longer periods of storage, store at 20°C. Avoid repeat freeze-thaw cycles.
<b>Precautions</b>	EBF1 Antibody is for research use only and not for use in diagnostic or therapeutic procedures.

## Protein Information

---

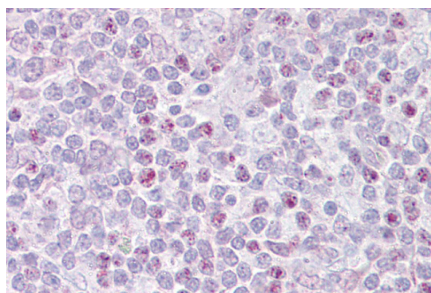
<b>Name</b>	EBF1
<b>Synonyms</b>	COE1, EBF
<b>Function</b>	Key pioneer transcription factor of B-cell specification and commitment (PubMed: <a href="#">27807034</a> ). Recognizes variations of the palindromic sequence 5'-ATCCCNNGGGAATT-3'. Operates in a transcription factor network to activate B-cell-specific genes and repress genes associated with alternative cell fates. For instance, positively regulates many B- cell specific genes including BCR or CD40 while repressing genes that direct cells into alternative lineages, including GATA3 and TCF7 for the T-cell lineage. In addition to its role during lymphopoiesis, controls the thermogenic gene program in adipocytes during development and in response to environmental cold (By similarity).

Cellular Location

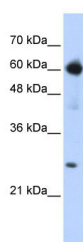
Nucleus.

## Images

---



Immunohistochemistry with Thymus tissue at an antibody concentration of 5µg/ml using anti-EBF1 antibody (AI11582)



WB Suggested Anti-EBF1 Antibody Titration: 0.2-1 µg/ml  
ELISA Titer: 1:312500  
Positive Control: Transfected 293T

Please note: All products are 'FOR RESEARCH USE ONLY. NOT FOR USE IN DIAGNOSTIC OR THERAPEUTIC PROCEDURES'.