

CBLL1 antibody - C-terminal region

Rabbit Polyclonal Antibody

Catalog # AI11594

Product Information

Application	WB
Primary Accession	Q75N03
Other Accession	NM_024814 , NP_079090
Reactivity	Human, Mouse, Rat, Zebrafish, Pig, Dog, Horse, Bovine
Predicted	Human, Mouse, Dog, Horse, Bovine
Host	Rabbit
Clonality	Polyclonal
Calculated MW	54519

Additional Information

Gene ID	79872
Alias Symbol	HAKAI, RNF188
Other Names	E3 ubiquitin-protein ligase Hakai, 6.3.2.-, Casitas B-lineage lymphoma-transforming sequence-like protein 1, RING finger protein 188, c-Cbl-like protein 1, CBLL1, HAKAI, RNF188
Format	Liquid. Purified antibody supplied in 1x PBS buffer with 0.09% (w/v) sodium azide and 2% sucrose.
Reconstitution & Storage	Add 100 ul of distilled water. Final anti-CBLL1 antibody concentration is 1 mg/ml in PBS buffer with 2% sucrose. For longer periods of storage, store at 20°C. Avoid repeat freeze-thaw cycles.
Precautions	CBLL1 antibody - C-terminal region is for research use only and not for use in diagnostic or therapeutic procedures.

Protein Information

Name	CBLL1 (HGNC:21225)
Function	E3 ubiquitin-protein ligase that mediates ubiquitination of several tyrosine-phosphorylated Src substrates, including CDH1, CTTN and DOK1 (By similarity). Targets CDH1 for endocytosis and degradation (By similarity). Associated component of the WMM complex, a complex that mediates N6-methyladenosine (m6A) methylation of RNAs, a modification that plays a role in the efficiency of mRNA splicing and RNA processing (PubMed: 29507755). Its function in the WMM complex is unknown (PubMed: 29507755).

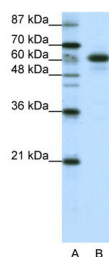
Cellular Location

Nucleus speckle. Nucleus, nucleoplasm. Cytoplasm {ECO:0000250|UniProtKB:Q9JIY2}. Note=Mainly nuclear with some fraction located in the cytoplasm. ZC3H13 is required to anchor component of the MACOM subcomplex, such as VIRMA, in the nucleus {ECO:0000250|UniProtKB:Q9JIY2}

References

Strausberg,R.L., (2004) J. Cell. Sci. 117 (PT 7), 989-998
Reconstitution and Storage:For short term use, store at 2-8C up to 1 week. For long term storage, store at -20C in small aliquots to prevent freeze-thaw cycles.
Publications:Horiuchi, K. et al. Identification of Wilms' Tumor 1-associating Protein Complex and Its Role in Alternative Splicing and the Cell Cycle. J. Biol. Chem. 288, 33292-302 (2013). WB, Human, Rat, Mouse, Bovine, H, Dog, Zebrafish, Pig24100041

Images



WB Suggested Anti-CBLL1 Antibody Titration: 1.25µg/ml
ELISA Titer: 1:62500
Positive Control: HepG2 cell lysate

Please note: All products are 'FOR RESEARCH USE ONLY. NOT FOR USE IN DIAGNOSTIC OR THERAPEUTIC PROCEDURES'.