

# OTP antibody - C-terminal region

Rabbit Polyclonal Antibody

Catalog # AI11599

## Product Information

<b>Application</b>	WB
<b>Primary Accession</b>	<a href="#">Q5XKR4</a>
<b>Other Accession</b>	<a href="#">NM_032109</a> , <a href="#">NP_115485</a>
<b>Reactivity</b>	Human, Mouse, Rat, Zebrafish, Pig, Dog, Bovine
<b>Predicted</b>	Mouse, Rat, Zebrafish, Chicken, Bovine
<b>Host</b>	Rabbit
<b>Clonality</b>	Polyclonal
<b>Calculated MW</b>	34159

## Additional Information

<b>Gene ID</b>	23440
<b>Other Names</b>	Homeobox protein orthopedia, OTP
<b>Format</b>	Liquid. Purified antibody supplied in 1x PBS buffer with 0.09% (w/v) sodium azide and 2% sucrose.
<b>Reconstitution &amp; Storage</b>	Add 50 ul of distilled water. Final anti-OTP antibody concentration is 1 mg/ml in PBS buffer with 2% sucrose. For longer periods of storage, store at 20°C. Avoid repeat freeze-thaw cycles.
<b>Precautions</b>	OTP antibody - C-terminal region is for research use only and not for use in diagnostic or therapeutic procedures.

## Protein Information

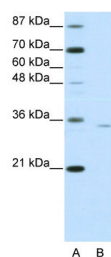
<b>Name</b>	OTP
<b>Function</b>	Probably involved in the differentiation of hypothalamic neuroendocrine cells.
<b>Cellular Location</b>	Nucleus {ECO:0000255   PROSITE-ProRule:PRU00108, ECO:0000255   PROSITE-ProRule:PRU00138, ECO:0000269   PubMed:10458915}

## References

Lin,X., (1999) Genomics 60 (1), 96-104  
Reconstitution and Storage:For short term use, store at 2-8C up to 1 week. For long term storage, store at -20C in small aliquots to prevent freeze-thaw cycles.

## Images

---



WB Suggested Anti-OTP Antibody Titration: 0.2-1  $\mu$ g/ml  
ELISA Titer: 1:62500  
Positive Control: Jurkat cell lysate

Please note: All products are 'FOR RESEARCH USE ONLY. NOT FOR USE IN DIAGNOSTIC OR THERAPEUTIC PROCEDURES'.