

SSBP4 antibody - C-terminal region

Rabbit Polyclonal Antibody

Catalog # AI11606

Product Information

Application	WB
Primary Accession	Q9BWW5
Other Accession	NM_001009998 , NP_001009998
Reactivity	Human, Mouse, Rat, Rabbit, Zebrafish, Dog, Horse, Bovine, Yeast
Predicted	Human, Mouse, Dog
Host	Rabbit
Clonality	Polyclonal
Calculated MW	37 KDa

Additional Information

Alias Symbol	MGC3181
Format	Liquid. Purified antibody supplied in 1x PBS buffer with 0.09% (w/v) sodium azide and 2% sucrose.
Reconstitution & Storage	Add 50 ul of distilled water. Final anti-SSBP4 antibody concentration is 1 mg/ml in PBS buffer with 2% sucrose. For longer periods of storage, store at 20°C. Avoid repeat freeze-thaw cycles.
Precautions	SSBP4 antibody - C-terminal region is for research use only and not for use in diagnostic or therapeutic procedures.

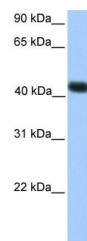
Protein Information

References

Ballif,B.A., (2004) Mol. Cell Proteomics 3 (11), 1093-1101 Reconstitution and Storage:For short term use, store at 2-8C up to 1 week. For long term storage, store at -20C in small aliquots to prevent freeze-thaw cycles.

Images

WB Suggested Anti-SSBP4 Antibody Titration: 0.2-1 µg/ml
Positive Control: Transfected 293T



Please note: All products are 'FOR RESEARCH USE ONLY. NOT FOR USE IN DIAGNOSTIC OR THERAPEUTIC PROCEDURES'.