

CPXCR1 antibody - middle region

Rabbit Polyclonal Antibody

Catalog # AI11611

Product Information

Application	WB, IHC
Primary Accession	Q8N123
Other Accession	NM_033048 , NP_149037
Reactivity	Human
Predicted	Human
Host	Rabbit
Clonality	Polyclonal
Calculated MW	34727

Additional Information

Gene ID	53336
Alias Symbol	CT77
Other Names	CPX chromosomal region candidate gene 1 protein, Cancer/testis antigen 77, CT77, CPXCR1
Format	Liquid. Purified antibody supplied in 1x PBS buffer with 0.09% (w/v) sodium azide and 2% sucrose.
Reconstitution & Storage	Add 50 ul of distilled water. Final anti-CPXCR1 antibody concentration is 1 mg/ml in PBS buffer with 2% sucrose. For longer periods of storage, store at 20°C. Avoid repeat freeze-thaw cycles.
Precautions	CPXCR1 antibody - middle region is for research use only and not for use in diagnostic or therapeutic procedures.

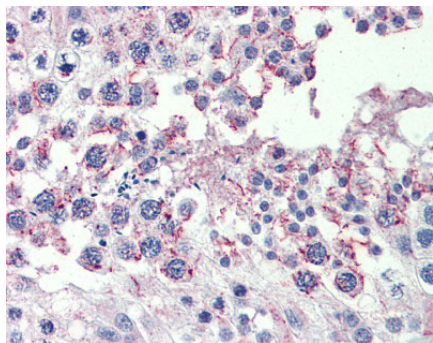
Protein Information

Name	CPXCR1
Tissue Location	Expressed in a variety of fetal tissues.

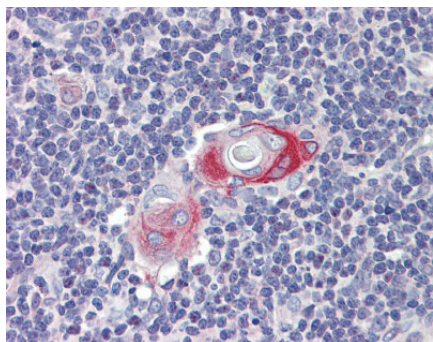
References

Braybrook,C., (2001) Hum. Genet. 108 (6), 537-545 Reconstitution and Storage:For short term use, store at 2-8C up to 1 week. For long term storage, store at -20C in small aliquots to prevent freeze-thaw cycles.

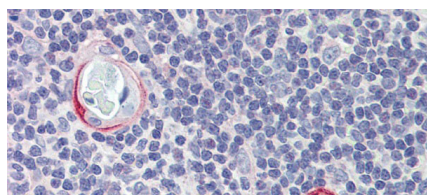
Images



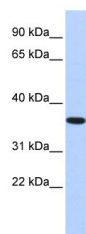
Anti-CPXCR1 antibody IHC staining of human testis. Immunohistochemistry of formalin-fixed, paraffin-embedded tissue after heat-induced antigen retrieval. Antibody concentration 10 µg/ml.



Anti-CPXCR1 antibody IHC staining of human thymus. Immunohistochemistry of formalin-fixed, paraffin-embedded tissue after heat-induced antigen retrieval. Antibody concentration 10 µg/ml.



Rabbit Anti-CPXCR1 Antibody
Paraffin Embedded Tissue: Human Tymus
Antibody Concentration: 10 µg/ml



WB Suggested Anti-CPXCR1 Antibody Titration: 1 µg/ml
Positive Control: Fetal Brain Lysate

Please note: All products are 'FOR RESEARCH USE ONLY. NOT FOR USE IN DIAGNOSTIC OR THERAPEUTIC PROCEDURES'.