

BTBD6 antibody - middle region

Rabbit Polyclonal Antibody

Catalog # AI11614

Product Information

Application	WB
Primary Accession	Q96KE9
Other Accession	NM_033271 , NP_150374
Reactivity	Human, Mouse, Rat, Rabbit, Zebrafish, Dog, Horse, Bovine
Predicted	Human, Mouse, Rat, Rabbit, Bovine
Host	Rabbit
Clonality	Polyclonal
Calculated MW	58776

Additional Information

Gene ID	90135
Alias Symbol	BDPL
Other Names	BTB/POZ domain-containing protein 6, Lens BTB domain protein, BTBD6, BDPL
Format	Liquid. Purified antibody supplied in 1x PBS buffer with 0.09% (w/v) sodium azide and 2% sucrose.
Reconstitution & Storage	Add 50 ul of distilled water. Final anti-BTBD6 antibody concentration is 1 mg/ml in PBS buffer with 2% sucrose. For longer periods of storage, store at 20°C. Avoid repeat freeze-thaw cycles.
Precautions	BTBD6 antibody - middle region is for research use only and not for use in diagnostic or therapeutic procedures.

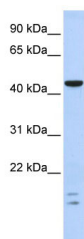
Protein Information

Name	BTBD6 (HGNC:19897)
Synonyms	BDPL
Function	Adapter protein for the cul3 E3 ubiquitin-protein ligase complex (By similarity). Involved in late neuronal development and muscle formation (By similarity).
Cellular Location	Cytoplasm {ECO:0000250 UniProtKB:Q2LE78}. Note=Found in punctated bodies in the cytoplasm {ECO:0000250 UniProtKB:Q2LE78}
Tissue Location	Expressed in lens..

References

Wistow, G., (et al) Mol. Vis. 8, 171-184 (2002) Reconstitution and Storage: For short term use, store at 2-8°C up to 1 week. For long term storage, store at -20°C in small aliquots to prevent freeze-thaw cycles.

Images



WB Suggested Anti-BTBD6 Antibody Titration: 0.2-1 µg/ml
ELISA Titer: 1:12500
Positive Control: Human brain

Please note: All products are 'FOR RESEARCH USE ONLY. NOT FOR USE IN DIAGNOSTIC OR THERAPEUTIC PROCEDURES'.