

# ZNF431 antibody - N-terminal region

Rabbit Polyclonal Antibody

Catalog # AI11620

## Product Information

---

<b>Application</b>	WB
<b>Primary Accession</b>	<a href="#">Q8TF32</a>
<b>Other Accession</b>	<a href="#">NM_133473</a> , <a href="#">NP_597730</a>
<b>Reactivity</b>	Human
<b>Predicted</b>	Human
<b>Host</b>	Rabbit
<b>Clonality</b>	Polyclonal
<b>Calculated MW</b>	67217

## Additional Information

---

<b>Gene ID</b>	170959
<b>Alias Symbol</b>	DKFZp313E0830, KIAA1969
<b>Other Names</b>	Zinc finger protein 431, ZNF431, KIAA1969
<b>Format</b>	Liquid. Purified antibody supplied in 1x PBS buffer with 0.09% (w/v) sodium azide and 2% sucrose.
<b>Reconstitution &amp; Storage</b>	Add 50 ul of distilled water. Final anti-ZNF431 antibody concentration is 1 mg/ml in PBS buffer with 2% sucrose. For longer periods of storage, store at 20°C. Avoid repeat freeze-thaw cycles.
<b>Precautions</b>	ZNF431 antibody - N-terminal region is for research use only and not for use in diagnostic or therapeutic procedures.

## Protein Information

---

<b>Name</b>	ZNF431
<b>Synonyms</b>	KIAA1969
<b>Function</b>	Sequence-specific DNA binding transcriptional repressor. Represses target gene transcription by recruiting HDAC1 and HDAC2 histone deacetylases. Acts as a specific transcriptional repressor for PTCH1 during embryonic development. Required for osteoblast differentiation and sonic hedgehog/SHH signaling response. Binds to the consensus site 5'-GCGCCC-3' in the promoter of PTCH1 (By similarity).
<b>Cellular Location</b>	Nucleus.

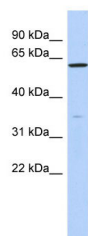
## References

---

Gerhard,D.S., Genome Res. 14 (10B), 2121-2127 (2004)Reconstitution and Storage:For short term use, store at 2-8C up to 1 week. For long term storage, store at -20C in small aliquots to prevent freeze-thaw cycles.

## Images

---



WB Suggested Anti-ZNF431 Antibody Titration: 0.2-1  
µg/ml  
ELISA Titer: 1:62500  
Positive Control: Hela cell lysate

Please note: All products are 'FOR RESEARCH USE ONLY. NOT FOR USE IN DIAGNOSTIC OR THERAPEUTIC PROCEDURES'.