

HDX antibody - middle region

Rabbit Polyclonal Antibody

Catalog # AI11628

Product Information

Application	WB
Primary Accession	Q7Z353
Other Accession	NM_144657 , NP_653258
Reactivity	Human, Rat, Rabbit, Dog, Horse
Predicted	Human, Rabbit, Pig, Chicken, Dog, Horse
Host	Rabbit
Clonality	Polyclonal
Calculated MW	77206

Additional Information

Gene ID	139324
Alias Symbol Other Names	CXorf43, D030011N01Rik, FLJ30678, MGC126769, MGC126771 Highly divergent homeobox, HDX, CXorf43
Format	Liquid. Purified antibody supplied in 1x PBS buffer with 0.09% (w/v) sodium azide and 2% sucrose.
Reconstitution & Storage	Add 50 ul of distilled water. Final anti-HDX antibody concentration is 1 mg/ml in PBS buffer with 2% sucrose. For longer periods of storage, store at 20°C. Avoid repeat freeze-thaw cycles.
Precautions	HDX antibody - middle region is for research use only and not for use in diagnostic or therapeutic procedures.

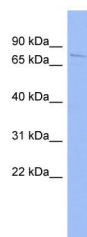
Protein Information

Name	HDX
Synonyms	CXorf43
Cellular Location	Nucleus {ECO:0000255 PROSITE-ProRule:PRU00108}.

References

Strausberg, R.L., (2002) Proc. Natl. Acad. Sci. U.S.A. 99 (26), 16899-16903
Reconstitution and Storage: For short term use, store at 2-8°C up to 1 week. For long term storage, store at -20°C in small aliquots to prevent freeze-thaw cycles.

Images



WB Suggested Anti-HDX Antibody Titration: 0.2-1 µg/ml

ELISA Titer: 1:62500

Positive Control: HT1080 cell lysate

Please note: All products are 'FOR RESEARCH USE ONLY. NOT FOR USE IN DIAGNOSTIC OR THERAPEUTIC PROCEDURES'.