

# Dmbx1 Antibody - C-terminal region

Rabbit Polyclonal Antibody

Catalog # AI11640

## Product Information

<b>Application</b>	WB
<b>Primary Accession</b>	<a href="#">Q91ZK4</a>
<b>Other Accession</b>	<a href="#">NM_130865</a> , <a href="#">NP_570935</a>
<b>Reactivity</b>	Human, Mouse, Rat, Rabbit, Zebrafish, Pig, Dog, Horse, Bovine
<b>Predicted</b>	Human, Mouse, Rat, Rabbit, Pig, Horse, Bovine
<b>Host</b>	Rabbit
<b>Clonality</b>	Polyclonal
<b>Calculated MW</b>	41115

## Additional Information

<b>Gene ID</b>	140477
<b>Alias Symbol</b>	Atx, Cdmx, Mbx, Otx3
<b>Other Names</b>	Diencephalon/mesencephalon homeobox protein 1, Diencephalon/mesencephalon-expressed brain homeobox gene 1 protein, Orthodenticle homolog 3, Paired-like homeobox protein DMBX1, Paired-type homeobox Atx, Dmbx1 {ECO:0000312   MGI:MGI:2153518}
<b>Format</b>	Liquid. Purified antibody supplied in 1x PBS buffer with 0.09% (w/v) sodium azide and 2% sucrose.
<b>Reconstitution &amp; Storage</b>	Add 50 ul of distilled water. Final anti-Dmbx1 antibody concentration is 1 mg/ml in PBS buffer with 2% sucrose. For longer periods of storage, store at 20°C. Avoid repeat freeze-thaw cycles.
<b>Precautions</b>	Dmbx1 Antibody - C-terminal region is for research use only and not for use in diagnostic or therapeutic procedures.

## Protein Information

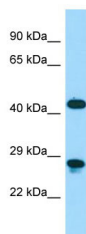
<b>Name</b>	Dmbx1 {ECO:0000312   MGI:MGI:2153518}
<b>Function</b>	Functions as a transcriptional repressor. May repress OTX2- mediated transactivation by forming a heterodimer with OTX2 on the P3C (5'-TAATCCGATTA-3') sequence. Required for brain development, neonatal survival, postnatal growth, and nursing ability.
<b>Cellular Location</b>	Nucleus {ECO:0000250   UniProtKB:O35137, ECO:0000255   PROSITE-ProRule:PRU00108, ECO:0000255   PROSITE-ProRule:PRU00138}

## Tissue Location

Expressed in adult brain, stomach, and testis. Expressed in the developing diencephalon, midbrain and hindbrain During limb development, expressed in a temporal pattern with expression being first restricted to the forelimbs and then subsequently to the hindlimbs.

## Images

---



Host: Rabbit

Target Name: Dmbx1

Sample Tissue: Mouse Stomach lysates

Antibody Dilution: 1.0µg/ml

Please note: All products are 'FOR RESEARCH USE ONLY. NOT FOR USE IN DIAGNOSTIC OR THERAPEUTIC PROCEDURES'.