

ZNF641 antibody - middle region

Rabbit Polyclonal Antibody

Catalog # AI11641

Product Information

Application	WB
Primary Accession	Q96N77
Other Accession	NM_152320 , NP_689533
Reactivity	Human, Mouse, Rat, Rabbit, Pig, Dog, Horse, Bovine
Predicted	Human, Rabbit, Pig, Dog, Horse, Bovine
Host	Rabbit
Clonality	Polyclonal
Calculated MW	49528

Additional Information

Gene ID	121274
Alias Symbol	DKFZp667D1012, FLJ31295
Other Names	Zinc finger protein 641, ZNF641
Format	Liquid. Purified antibody supplied in 1x PBS buffer with 0.09% (w/v) sodium azide and 2% sucrose.
Reconstitution & Storage	Add 50 ul of distilled water. Final anti-ZNF641 antibody concentration is 1 mg/ml in PBS buffer with 2% sucrose. For longer periods of storage, store at 20°C. Avoid repeat freeze-thaw cycles.
Precautions	ZNF641 antibody - middle region is for research use only and not for use in diagnostic or therapeutic procedures.

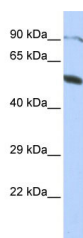
Protein Information

Name	ZNF641
Function	Transcriptional activator. Activates transcriptional activities of SRE and AP-1.
Cellular Location	Nucleus.
Tissue Location	Highly expressed in skeletal muscle, moderate expression in heart, liver, and pancreas, lower expression in placenta, no expression seen in brain, lung, and kidney

References

Qi,X., (2006) Biochem. Biophys. Res. Commun. 339 (4), 1155-1164 Reconstitution and Storage:For short term use, store at 2-8C up to 1 week. For long term storage, store at -20C in small aliquots to prevent freeze-thaw cycles.

Images



WB Suggested Anti-ZNF641 Antibody Titration: 0.2-1
µg/ml
ELISA Titer: 1:62500
Positive Control: HepG2 cell lysate

Please note: All products are 'FOR RESEARCH USE ONLY. NOT FOR USE IN DIAGNOSTIC OR THERAPEUTIC PROCEDURES'.