

# NPAS3 Antibody - middle region

Rabbit Polyclonal Antibody

Catalog # AI11650

## Product Information

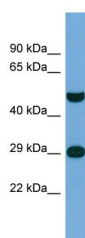
<b>Application</b>	WB
<b>Primary Accession</b>	<a href="#">Q8IXF0-6</a>
<b>Other Accession</b>	<a href="http://www.ncbi.nlm.nih.gov/nuccore/NM_001164749.1">http://www.ncbi.nlm.nih.gov/nuccore/NM_001164749.1</a> , <a href="http://www.ncbi.nlm.nih.gov/protein/NP_001158221.1">http://www.ncbi.nlm.nih.gov/protein/NP_001158221.1</a>
<b>Reactivity</b>	Human, Mouse, Rat, Rabbit, Zebrafish, Pig, Goat, Dog, Horse, Bovine
<b>Predicted</b>	Human, Mouse, Rat, Rabbit, Zebrafish, Pig, Dog, Bovine
<b>Host</b>	Rabbit
<b>Clonality</b>	Polyclonal
<b>Calculated MW</b>	28 KDa

## Additional Information

<b>Alias Symbol</b>	MOP6, PASD6, bHLHe12
<b>Format</b>	Liquid. Purified antibody supplied in 1x PBS buffer with 0.09% (w/v) sodium azide and 2% sucrose.
<b>Reconstitution &amp; Storage</b>	Add 50 ul of distilled water. Final anti-NPAS3 antibody concentration is 1 mg/ml in PBS buffer with 2% sucrose. For longer periods of storage, store at 20°C. Avoid repeat freeze-thaw cycles.
<b>Precautions</b>	NPAS3 Antibody - middle region is for research use only and not for use in diagnostic or therapeutic procedures.

## Protein Information

## Images



Host: Rabbit  
Target Name: NPAS3  
Sample Tissue: THP-1 Whole cell lysate  
S  
Antibody Dilution: 1.0µg/ml