

# NFATC1 antibody - C-terminal region

Rabbit Polyclonal Antibody

Catalog # AI11656

## Product Information

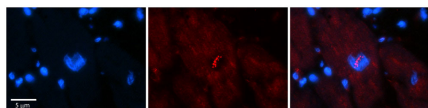
Application	WB
Primary Accession	<a href="#">B5B2M5</a>
Other Accession	<a href="#">NM_172387</a> , <a href="#">NP_765975</a>
Reactivity	Human, Mouse, Rat, Zebrafish, Pig, Dog, Horse, Bovine
Predicted	Human, Mouse, Zebrafish, Dog, Bovine
Host	Rabbit
Clonality	Polyclonal
Calculated MW	100 KDa

## Additional Information

Alias Symbol	MGC138448, NF-ATC, NFAT2, NFATc
Format	Liquid. Purified antibody supplied in 1x PBS buffer with 0.09% (w/v) sodium azide and 2% sucrose.
Reconstitution & Storage	Add 50 ul of distilled water. Final anti-NFATC1 antibody concentration is 1 mg/ml in PBS buffer with 2% sucrose. For longer periods of storage, store at 20°C. Avoid repeat freeze-thaw cycles.
Precautions	NFATC1 antibody - C-terminal region is for research use only and not for use in diagnostic or therapeutic procedures.

## Protein Information

## Images



Rabbit Anti-NFATC1 Antibody  
Catalog Number: AI11656  
Formalin Fixed Paraffin Embedded Tissue: Human Adult heart  
Observed Staining: Nuclear, Cytoplasmic  
Primary Antibody  
Concentration: 1:100  
Secondary Antibody: Donkey anti-Rabbit-Cy2/3  
Secondary Antibody  
Concentration: 1:200  
Magnification: 20X  
Exposure Time: 0.5 2.0 sec  
Protocol located in Reviews and Data.



WB Suggested Anti-NFATC1 Antibody Titration: 0.2-1  
 $\mu\text{g/ml}$   
ELISA Titer: 1:312500  
Positive Control: COLO205 cell lysate

Please note: All products are 'FOR RESEARCH USE ONLY. NOT FOR USE IN DIAGNOSTIC OR THERAPEUTIC PROCEDURES'.