

DLX1 antibody - N-terminal region

Rabbit Polyclonal Antibody

Catalog # AI11661

Product Information

Application	WB
Primary Accession	P56177
Other Accession	NM_178120 , NP_835221
Reactivity	Human, Mouse, Rat, Rabbit, Zebrafish, Pig, Dog, Horse, Bovine
Predicted	Mouse, Rat, Zebrafish, Chicken, Bovine
Host	Rabbit
Clonality	Polyclonal
Calculated MW	27320

Additional Information

Gene ID	1745
Other Names	Homeobox protein DLX-1, DLX1
Format	Liquid. Purified antibody supplied in 1x PBS buffer with 0.09% (w/v) sodium azide and 2% sucrose.
Reconstitution & Storage	Add 50 ul of distilled water. Final anti-DLX1 antibody concentration is 1 mg/ml in PBS buffer with 2% sucrose. For longer periods of storage, store at 20°C. Avoid repeat freeze-thaw cycles.
Precautions	DLX1 antibody - N-terminal region is for research use only and not for use in diagnostic or therapeutic procedures.

Protein Information

Name	DLX1
Function	Plays a role as a transcriptional activator or repressor (PubMed: 14671321). Inhibits several cytokine signaling pathways, such as TGFβ1, activin-A/INHBA and BMP4 by interfering with the transcriptional stimulatory activity of transcription factors, such as MSX2, FAST2, SMAD2 and SMAD3 during hematopoietic cell differentiation (PubMed: 14671321). Plays a role in terminal differentiation of interneurons, such as amacrine and bipolar cells in the developing retina (By similarity). Likely to play a regulatory role in the development of the ventral forebrain (By similarity). May play a role in craniofacial patterning and morphogenesis and may be involved in the early development of diencephalic subdivisions (By similarity).
Cellular Location	Nucleus.

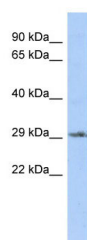
Tissue Location

Expressed in hematopoietic cell lines.

References

Kahler,A.K., (er) Am. J. Med. Genet. B Neuropsychiatr. Genet. (2008) In press
Reconstitution and Storage: For short term use, store at 2-8C up to 1 week. For long term storage, store at -20C in small aliquots to prevent freeze-thaw cycles.

Images



WB Suggested Anti-DLX1 Antibody Titration: 0.2-1 µg/ml
ELISA Titer: 1:312500
Positive Control: THP-1 cell lysate

Please note: All products are 'FOR RESEARCH USE ONLY. NOT FOR USE IN DIAGNOSTIC OR THERAPEUTIC PROCEDURES'.