

Dlx1 antibody - C-terminal region

Rabbit Polyclonal Antibody

Catalog # AI11662

Product Information

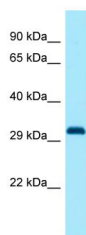
Application	WB
Primary Accession	G3V669
Other Accession	NM_001100531 , NP_001094001
Reactivity	Human, Mouse, Rat, Rabbit, Zebrafish, Pig, Dog, Horse, Bovine
Predicted	Human, Mouse, Rat, Zebrafish, Pig, Dog, Horse
Host	Rabbit
Clonality	Polyclonal
Calculated MW	28 kDa

Additional Information

Alias Symbol	MGC189409
Format	Liquid. Purified antibody supplied in 1x PBS buffer with 0.09% (w/v) sodium azide and 2% sucrose.
Reconstitution & Storage	Add 50 ul of distilled water. Final anti-Dlx1 antibody concentration is 1 mg/ml in PBS buffer with 2% sucrose. For longer periods of storage, store at 20°C. Avoid repeat freeze-thaw cycles.
Precautions	Dlx1 antibody - C-terminal region is for research use only and not for use in diagnostic or therapeutic procedures.

Protein Information

Images



Host: Rabbit
Target Name: Dlx1
Antibody Dilution: 1.0µg/ml
Sample Tissue: Rat Pancreas