

TBX20 antibody - middle region

Rabbit Polyclonal Antibody

Catalog # AI11676

Product Information

Application	WB
Primary Accession	Q000T4
Other Accession	NM_001077653 , NP_001071121
Reactivity	Human, Mouse, Rat, Rabbit, Zebrafish, Pig, Dog, Horse, Bovine
Predicted	Human, Mouse, Rat, Rabbit, Zebrafish, Pig, Chicken, Dog, Horse, Bovine
Host	Rabbit
Clonality	Polyclonal
Calculated MW	50 KDa

Additional Information

Alias Symbol	ASD4
Format	Liquid. Purified antibody supplied in 1x PBS buffer with 0.09% (w/v) sodium azide and 2% sucrose.
Reconstitution & Storage	Add 50 ul of distilled water. Final anti-TBX20 antibody concentration is 1 mg/ml in PBS buffer with 2% sucrose. For longer periods of storage, store at 20°C. Avoid repeat freeze-thaw cycles.
Precautions	TBX20 antibody - middle region is for research use only and not for use in diagnostic or therapeutic procedures.

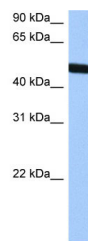
Protein Information

References

Kirk,E.P., (2007) Am. J. Hum. Genet. 81 (2), 280-291 Reconstitution and Storage:For short term use, store at 2-8C up to 1 week. For long term storage, store at -20C in small aliquots to prevent freeze-thaw cycles.

Images

WB Suggested Anti-TBX20 Antibody Titration: 0.2-1 µg/ml
Positive Control: HepG2 cell lysate



Please note: All products are 'FOR RESEARCH USE ONLY. NOT FOR USE IN DIAGNOSTIC OR THERAPEUTIC PROCEDURES'.