

Foxc2 antibody - N-terminal region

Rabbit Polyclonal Antibody

Catalog # AI11684

Product Information

Application	WB
Primary Accession	Q61850
Other Accession	NM_013519 , NP_038547
Reactivity	Human, Mouse, Rat, Dog, Horse, Bovine
Predicted	Human, Mouse, Chicken, Bovine
Host	Rabbit
Clonality	Polyclonal
Calculated MW	52874

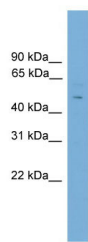
Additional Information

Gene ID	14234
Alias Symbol	Fkh14, Hfhbf3, MFH-1, Mfh1
Other Names	Forkhead box protein C2, Brain factor 3, BF-3, Forkhead-related protein FKHL14, Mesenchyme fork head protein 1, MFH-1 protein, Transcription factor FKH-14, Foxc2, Fkh14, Fkhl14, Mfh1
Format	Liquid. Purified antibody supplied in 1x PBS buffer with 0.09% (w/v) sodium azide and 2% sucrose.
Reconstitution & Storage	Add 50 ul of distilled water. Final anti-Foxc2 antibody concentration is 1 mg/ml in PBS buffer with 2% sucrose. For longer periods of storage, store at 20°C. Avoid repeat freeze-thaw cycles.
Precautions	Foxc2 antibody - N-terminal region is for research use only and not for use in diagnostic or therapeutic procedures.

Protein Information

Name	Foxc2
Synonyms	Fkh14, Fkhl14, Mfh1
Function	Transcriptional activator.
Cellular Location	Nucleus {ECO:0000250 UniProtKB:Q99958}.
Tissue Location	Expressed in the brain, muscle, heart, fat, kidney, lung, liver, uterus, ovary and testis.

Images



WB Suggested Anti-Foxc2 Antibody Titration: 0.2-1 µg/ml
ELISA Titer: 1:312500
Positive Control: Mouse Uterus

Please note: All products are 'FOR RESEARCH USE ONLY. NOT FOR USE IN DIAGNOSTIC OR THERAPEUTIC PROCEDURES'.