

INSIG1 antibody - middle region

Rabbit Polyclonal Antibody

Catalog # AI11687

Product Information

Application	WB, IHC
Primary Accession	A4D2M9
Other Accession	NM_198336 , NP_938150
Reactivity	Human, Mouse, Rat, Rabbit, Zebrafish, Pig, Goat, Dog, Horse, Bovine, Sheep
Predicted	Human, Rabbit, Zebrafish, Pig, Chicken, Dog
Host	Rabbit
Clonality	Polyclonal
Calculated MW	36 kDa

Additional Information

Alias Symbol	CL-6, MGC1405, CL6
Format	Liquid. Purified antibody supplied in 1x PBS buffer with 0.09% (w/v) sodium azide and 2% sucrose.
Reconstitution & Storage	Add 50 ul of distilled water. Final anti-INSIG1 antibody concentration is 1 mg/ml in PBS buffer with 2% sucrose. For longer periods of storage, store at 20°C. Avoid repeat freeze-thaw cycles.
Precautions	INSIG1 antibody - middle region is for research use only and not for use in diagnostic or therapeutic procedures.

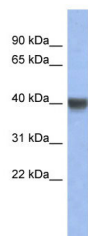
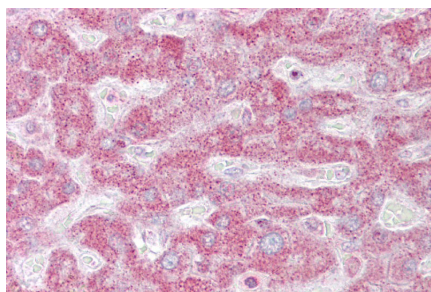
Protein Information

References

Roth,A., (2008) Mol. Pharmacol. 73 (4), 1282-1289 Reconstitution and Storage:For short term use, store at 2-8C up to 1 week. For long term storage, store at -20C in small aliquots to prevent freeze-thaw cycles.

Images

Immunohistochemistry with Liver tissue at an antibody concentration of 10µg/ml using anti-INSIG1 antibody (AI11687)



WB Suggested Anti-INSIG1 Antibody Titration: 0.2-1 $\mu\text{g/ml}$
ELISA Titer: 1:312500
Positive Control: Human Spleen

Please note: All products are 'FOR RESEARCH USE ONLY. NOT FOR USE IN DIAGNOSTIC OR THERAPEUTIC PROCEDURES'.