

# INSIG1 antibody - middle region

Rabbit Polyclonal Antibody

Catalog # AI11688

## Product Information

---

<b>Application</b>	WB
<b>Primary Accession</b>	<a href="#">A4D2M9</a>
<b>Other Accession</b>	<a href="#">NM_198336</a> , <a href="#">NP_938150</a>
<b>Reactivity</b>	Human, Mouse
<b>Predicted</b>	Human
<b>Host</b>	Rabbit
<b>Clonality</b>	Polyclonal
<b>Calculated MW</b>	36 kDa

## Additional Information

---

<b>Alias Symbol</b>	CL-6, MGC1405, CL6
<b>Format</b>	Liquid. Purified antibody supplied in 1x PBS buffer with 0.09% (w/v) sodium azide and 2% sucrose.
<b>Reconstitution &amp; Storage</b>	Add 50 ul of distilled water. Final anti-INSIG1 antibody concentration is 1 mg/ml in PBS buffer with 2% sucrose. For longer periods of storage, store at 20°C. Avoid repeat freeze-thaw cycles.
<b>Precautions</b>	INSIG1 antibody - middle region is for research use only and not for use in diagnostic or therapeutic procedures.

## Protein Information

---

## References

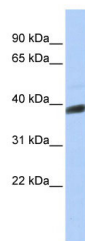
---

Roth,A., (2008) Mol. Pharmacol. 73 (4), 1282-1289 Reconstitution and Storage:For short term use, store at 2-8C up to 1 week. For long term storage, store at -20C in small aliquots to prevent freeze-thaw cycles.

## Images

---

WB Suggested Anti-INSIG1 Antibody Titration: 0.2-1 µg/ml  
ELISA Titer: 1:312500  
Positive Control: Human brain



Please note: All products are 'FOR RESEARCH USE ONLY. NOT FOR USE IN DIAGNOSTIC OR THERAPEUTIC PROCEDURES'.